

---

# Software Release Notes

---

## Video Wall Toolbox v2.0.6

This document provides update instructions and describes known and fixed issues in the Video Wall Toolbox version 2.0.6 for Ultra and Extreme Series display panels.

### Affected products

The following products are affected.

- FHD493-XE
- FHD552-X
- FHD553-X
- FHD553-XE and FHD553-XE-H
- FHD553-XE-R and FHD553-XE-HR

### New in this release

The 2.0.6 release introduces the following new features and changes:

- Added the Auto Refresh feature, which removes the need to press Refresh every time an adjustment is made.
- Added the Telnet Port setting for the Communication port configuration.
- Removed the Mute, Volume +, and Volume - buttons from the software.
- Removed the AV/DVI2, S-V, and COMP buttons.

### Fixed issues

The following issue has been fixed in this software release.

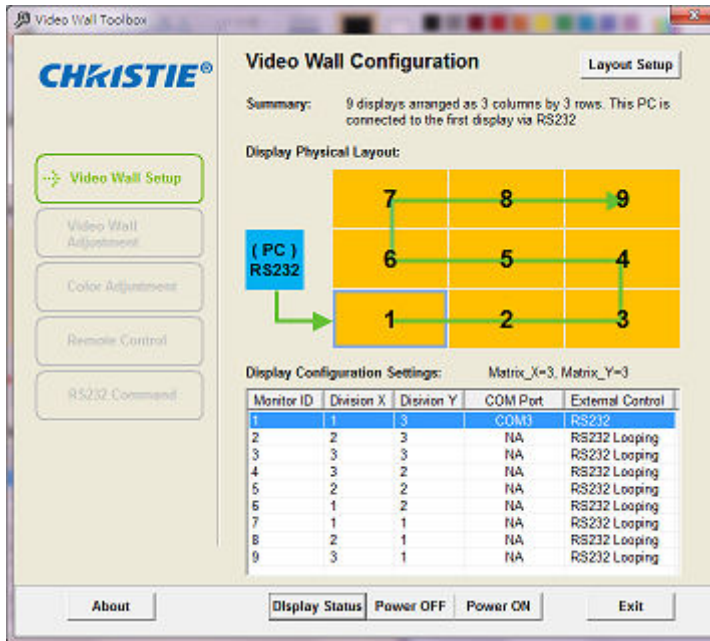
- Resolved issues where not all text in the software was visible.
- Resolved an over range issue in the monitor display area.

## Installing the Video Wall Toolbox application

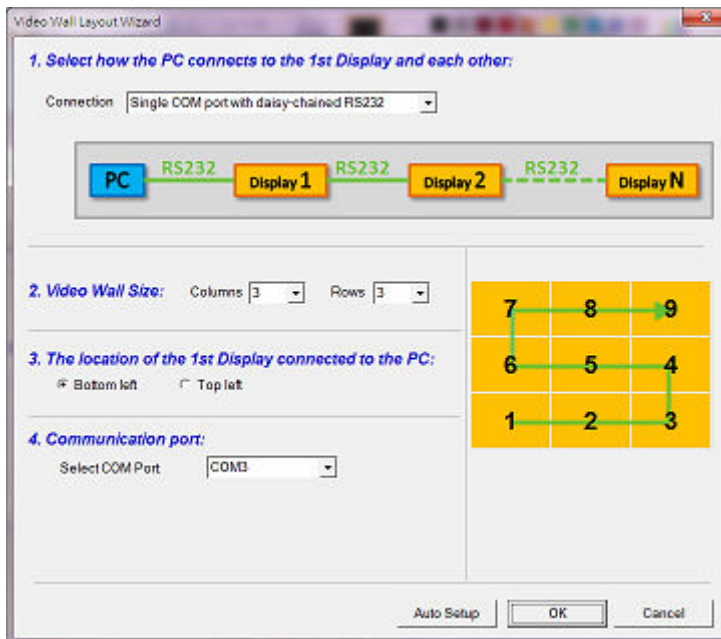
Learn how to install and set up the Video Wall Toolbox application on the control computer.

1. Download the Video Wall Toolbox application from <https://www.christiedigital.com/>.
2. Connect the control computer to a display panel or video wall.  
For detailed instructions on connecting a control computer to a video wall using an RS232 or an Ethernet connection, refer to the user manual for the product.
3. Verify that the baud rate for the RS232 connection on the control computer matches the baud rate of the display panel.  
The default baud rate is 115200.

4. Launch The Video Wall Toolbox application.



5. To specify the size of the video wall, in the **Video Wall Size** fields, enter the number of columns and rows in your video wall.



6. Specify the location of the first display panel that is connected to the display computer.
7. To connect the display panel or video wall to the control computer, in the **Select COM Port** list, select an option.
8. To automatically assign Monitor IDs to all the display panels in a video wall, select **Auto Setup**.

## Product documentation

For installation, setup, and user information, see the product documentation available on the Christie website. Read all instructions before using or servicing this product.

1. Access the documentation from the Christie website:
  - Go to this URL: <http://bit.ly/2qE1vrw>.
  - Scan the QR code using a QR code reader app on a smartphone or tablet.



2. On the product page, select the model and switch to the **Downloads** tab.

## Technical support

Technical support for Christie products is available at:

- North and South America: +1-800-221-8025 or [Support.Americas@christiedigital.com](mailto:Support.Americas@christiedigital.com)
- Europe, Middle East, and Africa: +44 (0) 1189 778111 or [Support.EMEA@christiedigital.com](mailto:Support.EMEA@christiedigital.com)
- Asia Pacific: +65 6877-8737 or [Support.APAC@christiedigital.com](mailto:Support.APAC@christiedigital.com)