



LET'S  
**COLLABORATE**

Video wall solutions

**CHRISTIE®**



# ENSURING CONTROL ROOMS OPERATE EFFICIENTLY

## Your trusted video wall solutions partner

We're proud to be a leader in video wall technology for mission-critical control centers in government and corporate sectors. Our video wall processing, control, and signal distribution technologies ensure control rooms operate at peak efficiency, and are backed by our world-class [Christie® Professional Services team](#) – local experts ready

to ensure your success every step of the way. Our leading-edge video wall technologies build on a legacy of innovation that spans nearly a century. Our customers rely on Christie technology to collaborate and captivate audiences – whether in a movie theatre, classroom, or mission-critical command center.



^ Beautiful architecture and one of the most advanced video wall systems ever built entice high-end clients for unmatched presentations and live event experiences at IAC, USA.

# MARKETS WE PROUDLY SERVE

Christie offers LED/LCD video wall solutions for all these markets.

**Government**

- › Mission-critical control rooms
- › Military situation rooms

**Retail and hospitality**

**Corporate**

**Museums**

**Themed entertainment**

**Public surveillance**

**Higher education**

**Energy and utilities**

**Transportation and logistics**

**Traffic management**

**Smart cities**

Speak to our LED expert about how we can provide custom-made video wall solutions for your next project.

**Contact us** 



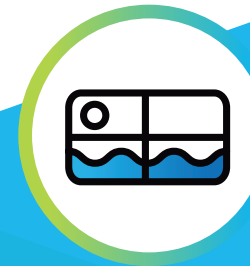
# CHOOSING VIDEO WALL TECHNOLOGY

For control room environments

Receive information, analyze, and collaborate to maintain status quo or respond to emergent situations - this is the reality of control room environments. The challenge lies in effectively visualizing real-time intelligence for efficient monitoring, awareness, and communication. Where and how you need to display information are critical questions that help determine the best technology to support those who manage and monitor operational continuity, and respond to actual or impending breaches in protocol.

When you need to create a focal point of information for a control room team, particularly in a large format that allows operators to view multiple feeds of content clearly and simultaneously, video walls are the prevalent solution.

Two primary categories of solid-state technology used for control room video walls include LCD panels and LED tiles.



## Direct-view

- › LCD panels
- › LCD video walls
- › LED video walls
- › MicroTiles® LED



## Processing

- › Image processors
- › Media servers and players
- › Switchers and AV distribution
- › Video wall processors



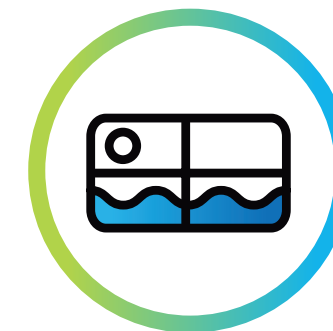
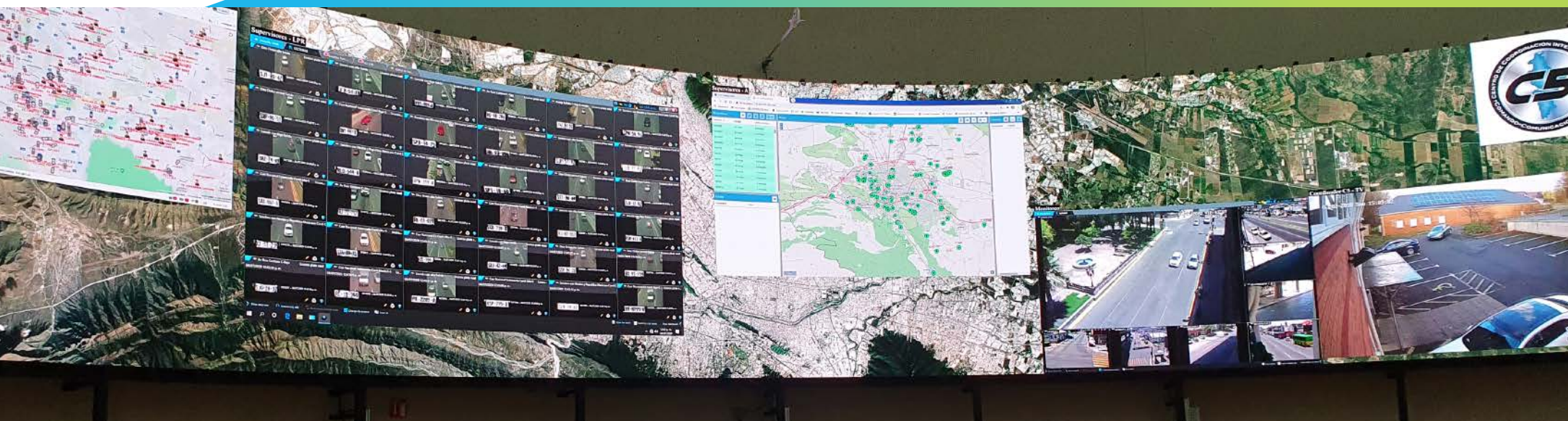
^ [Montgomery County's EOC relies on a 12-channel video wall of Christie Extreme Series LCD panels in a 2 x 6 array, with content delivery by Christie Terra SDVoE solution via 10G Ethernet.](#)



^ [Large LCD displays play an integral part in helping JBB employees collaborate and easily share information.](#)

Photo credit: Jaros, Baum & Boles





## Video wall systems

- ^ Installed in 2020 for the state government of Nuevo León, Mexico, this video wall system aids in surveillance and allows the government to easily manage different applications across departments.

### Video walls - LED and LCD

We offer the world's best visual display technology and the engineering expertise to successfully implement the most advanced video wall systems. For information sharing, entertainment, or digital signage applications, we can tailor a display solution for your needs. Choose one display technology or combine multiple platforms to create impressive displays that inspire collaborative information sharing.

### LED video walls

Our lineup of indoor LED tiles provides unmatched choice, versatility, and flexibility for specifying high-performance video walls. From premium options for corporate brand-building to more budget-friendly solutions for high-impact installations, our LED video walls effectively share your content in vibrant and engaging ways. Our TAA-compliant, proprietary MicroTiles® LED deliver the latest technology and advanced award-winning mechanical design. Build your display in virtually any shape or size and create inside or outside 90-degree corners, and concave and convex curves.

### LCD video walls

Our tiled LCD panels offer a flexible platform for a variety of 24/7 indoor video wall applications. Available in ultra-narrow and extreme-narrow bezel widths, our range of high-performance LCD products are perfect for your collaboration spaces, meeting rooms, training facilities, and more. Ask about the benefits of our remote power option.

### Discrete LCD panels

Our large-format LCD panels offer the perfect standalone solution when you want to make a big impact in any setting. Available in a range of price points and sizes up to 98" and offering the latest performance features, our large-format displays offer a flexible fit and are designed for years of reliable, low-maintenance performance.



## Content management and image processing

Get the most out of your Christie display by combining it with our powerful content management and processing technologies for a complete, integrated solution. Our extensive range of image processors and video wall processors make it easy to design customized, integrated video wall systems for your:

- › Control rooms
- › Lobbies and atriums
- › Training facilities and boardrooms
- › Command centers
- › Broadcast
- › Security and surveillance
- › Large-venue functions



^ Christie Hedra Pro-KVM

## Which solution is right for your application?



What could you do with a control-room-in-a-box? Choose TAA-compliant [Christie Hedra™](#) for secure, real-time access to your data. You can share critical information from virtually anywhere for seamless collaboration and fast decision-making. With this multi-view KVM, you can flexibly arrange, view, and manage up to 27 sources, inputs, and streams as you enjoy secure, latency-free operation.



[Terra® SDVoE \(Software Defined Video over Ethernet\) solutions](#) include everything you need for direct integration into 1DLP®/3DLP® projectors and MicroTiles® LED, for uncompressed, zero-frame latency, artifact-free content over 10G networks.



The first multi-screen windowing processor and content management solution able to display 4K@60Hz content on every channel, [Spyder X80's](#) endless processing features make it the ideal solution for any combination of large-format displays, including projection, and direct-view LCD or LED video walls. Scale and position your content anywhere across synchronized outputs and ensure the highest quality presentation on any size of LED display.



# CHRISTIE PROFESSIONAL SERVICES

^ Skilled Christie technician Steve Haydon meticulously replaces LEDs – by hand and from the original manufacturing batch.



*We are more than the technology solutions we create. Christie is powered by Christie people. And this is what sets us apart.*

## Christie Professional Services

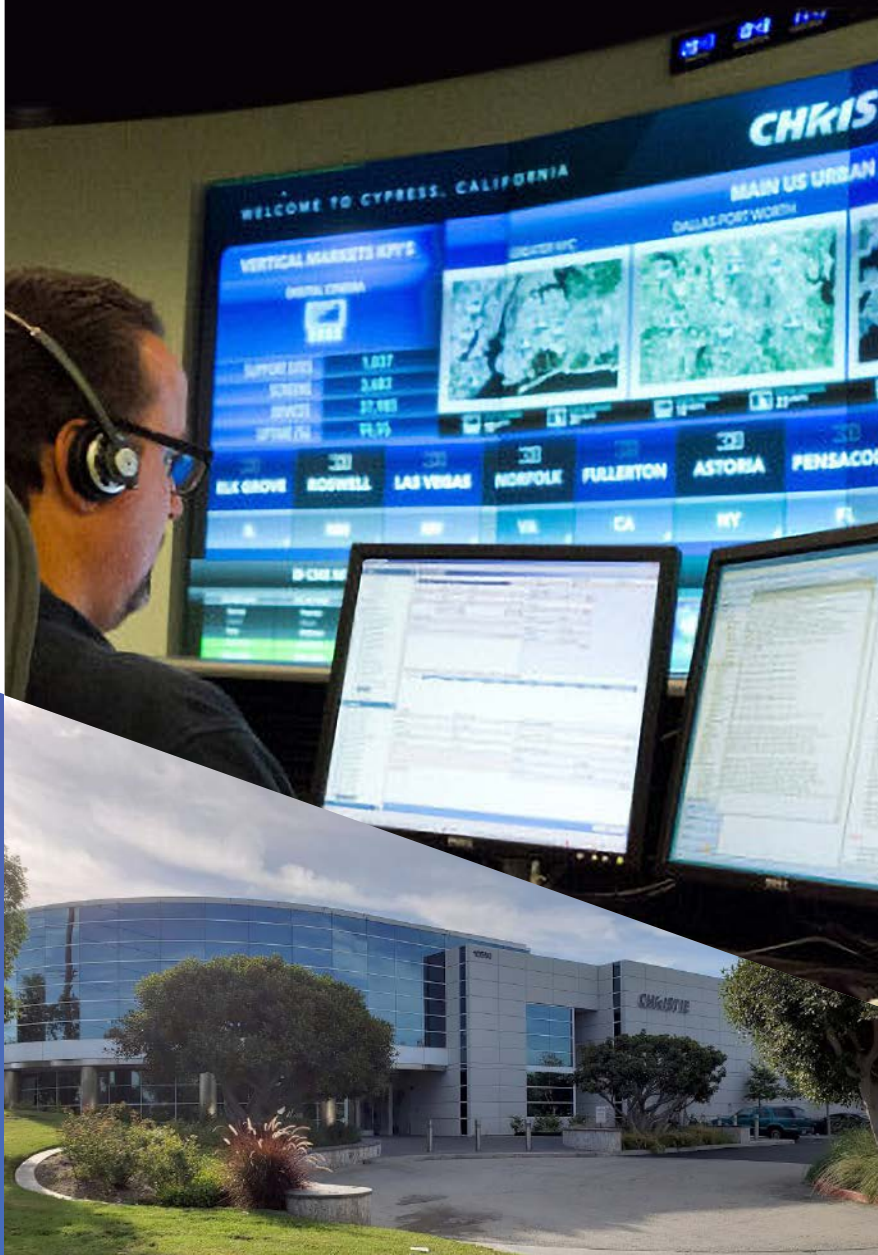
One of the industry's most trusted advisors in designing, manufacturing, deploying, and supporting professional AV display systems. With strategic location worldwide and a comprehensive network of customer service engineers, project managers, and training and service technicians, we rapidly dispatch the expertise, parts, and replacements you require.

### **People, process, technology – every step of the way**

Every aspect of your commercial display system gets our attention and support. Christie Professional Services handle everything from technical design to procuring the right mix of media players, software, and integrated technologies for digital networks.

As an industry-leading technologies provider, we offer:

- › Immediate 24/7/365 technical support through our world-class Network Operations Center
- › Remote monitoring and management
- › Preventative onsite maintenance
- › Rapid emergency onsite resolution
- › Complete system protection and accelerated access to critical spare parts
- › Hands-on classroom and onsite training
- › Flawless project management
- › Trusted third-party service management



## Christie has you covered

We build complete integrated AV solutions, from small- and mid-sized projection systems to high-end video wall and image processing technologies. We design our products to work together and create solutions that fit your needs and your budget.

On large-scale projects or organization-wide rollouts, we work with you to identify the most cost-effective solution for streamlined duplication across similar room types. We also manage scaling-up from basic foundational systems, and with our commitment to innovation, you know you're investing in high-quality, future-proofed solutions.

Visual display technology is in our DNA. Our mission statement is about creating shared visual experiences, and that's not just about fulfilling AV requirements, but your needs and expectations. You're not just getting products, you're getting complete integrated solutions, and the expertise and support you need to create effective and engaging organizational experiences.



^ Redefine your control room with an integrated Christie solution. Share, view, and interact with data across a distributed organization.

Have any questions?  
Want to talk about a project?  
Let's talk! We're here to help.

Contact us 

[christiedigital.com](http://christiedigital.com)

For the most current specification information, please visit [christiedigital.com](http://christiedigital.com)

Copyright 2023 Christie Digital Systems USA, Inc. All rights reserved. Our centers of excellence for manufacturing in Kitchener, Ontario, Canada and in Shenzhen, China are ISO 9001:2015 Quality Management System-certified. All brand names and product names are trademarks, registered trademarks or tradenames of their respective holders. "Christie" is a trademark of Christie Digital Systems USA, Inc., registered in the United States of America and certain other countries. DLP® and the DLP logo are registered trademarks of Texas Instruments. Performance specifications are typical. Due to constant research, specifications are subject to change without notice.  
CD3884-VideoWall-Solution-Brochure-Sep-23-EN

**CHRISTIE**®