

# Video wall retrofit solutions



## Save time and money by upgrading your video wall with the latest display solutions from Christie

Upgrading your control room video wall technology doesn't have to be costly or time consuming. With Christie's video wall retrofit solutions, we are committed to providing customers with cost-effective and performance-driven options that can integrate quickly and easily into the existing infrastructure of any control room.

Take advantage of the latest Christie® Entero™ HB projection display technology and bring industry-leading performance, reliability and confidence to your control room video wall. As the only manufacturer to offer both short and long throw lenses, retrofitting your existing display cubes or custom video wall is easy. Christie also offers extensive custom design and support services that allow you to continue your day-to-day operations with minimal impact while upgrading older technology.

**CHRISTIE®**

# Christie design and support

For more than 30 years, Christie® has been providing state-of-the-art control room video wall display technologies. Our design and support teams will assess your site and video wall system, and then work closely with consultants, system integrators and you, to develop a plan that meets your requirements and budget. Our expert teams have the experience and knowledge to properly execute any control room video wall retrofit.



▲ Take advantage of Christie's new high-brightness LED engines while maintaining your current infrastructure.

## Upgrade your video wall technology

Bring the latest projection display technology to your video wall with Christie's cost-effective upgrade solutions. Whatever brand of display cube you may have and whatever size it may be, or if you have an older rear screen system call us to see how we can help. Christie has been installing the latest LED based projection engines into our early cubes and into our competitors cubes for years with fantastic results. Take advantage of our new high-brightness LED engines while maintaining your current infrastructure and save.

### Benefits

High-quality video and real-time information feeds that improve situational monitoring and content management to enable quicker decision-making

Data integration from multiple sources and content that can be placed and resized on screen, allowing you to easily manage content and receive timely and accurate information

A high-performance solution that offers low maintenance, reliability and complete display flexibility

## Customized retrofit display solutions

Christie offers customized design services to facilitate field upgrading of older systems so you can utilize the latest projection and display technologies. Upgrading can save on costs, and reduce the time and disruption involved with system replacement. In many cases existing cubes, structures and screens can remain intact and only the projection engine is replaced, enabling a greener solution overall.

All systems are designed and manufactured for use with our 1-chip DLP® Christie Entero™ HB projection engine products.

### Features

A choice of standard diagonal screen sizes – 50", 67", 70", 72" and 80"

Custom diagonal screen sizes are available from 60-120"

Display systems supported by 1-chip DLP LED-based projection engines

Front or rear-access options

Narrowest screen gaps in the industry

Superior quality and warranty from just one manufacturer

### Benefits

**Performance** – with the most advanced LED display system design and Christie's quality, service and support, Christie Entero HB offers the highest brightness, 24/7 performance and reliability, and a low total cost of ownership and operation

**Control** – the Christie Entero HB series is the first and only LED control room solution to offer wireless capability. Make adjustments, control the wall or perform diagnostic monitoring through an iPad or other similar wireless device

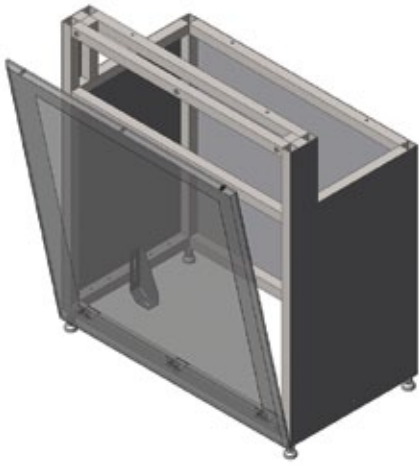
**Flexibility** – rear-projection engines offer installation flexibility giving you options for resolution, aspect ratio and lens orientation

**Maintenance** – designed for zero maintenance, the Christie Entero HB series is solid state, has no consumables and no scheduled maintenance for at least 5 years

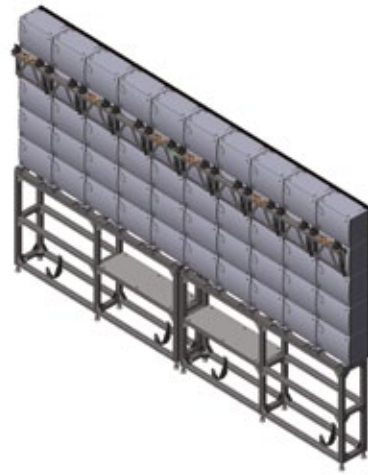
**Design expertise** – Christie has successfully implemented solutions in locations with sagging floors, complications from curved arrays, different screen types and older, third-party display cubes



▲ Christie Entero HB light engine.



▲ Our custom cubes can retrofit Christie light engines into existing cube cabinets, Christie cabinets, competitors' cabinets or existing custom structures.



▲ Refreshing your displays can also include custom pedestals – non-standard heights, straight or curved, free standing, floor standing or wall hung.

### Moveable wall systems

If space is limited, Christie offers manual or motorized moveable wall systems. This allows your display system to be positioned directly against a rear-facing wall yet moved forward 18-24" for easy access and serviceability.

#### Benefits

System is easier to service with little or no interruption in front of the video wall

Minimizes the gaps between screens – 1mm rather than the usual 2mm found in other front-access systems

Saves money due to reduced interruption and downtime

### Custom pedestals and structures

Christie also provides pedestals with custom heights, finishes and requirements for our standard 50", 67", 70", 72" and 80" cubes, Christie MicroTiles® and custom displays.

To take advantage of Christie Entero HB display technology and refresh your video wall display with a retrofit solution, contact your Christie representative.

▼ Region of Durham, Canada – the 2x5 array was retrofitted from lamped rear-screen projectors to Christie Entero HB LED projection.



#### Corporate offices

---

Christie Digital Systems USA, Inc.  
USA – Cypress  
ph: 714 236 8610

Christie Digital Systems Canada Inc.  
Canada – Kitchener  
ph: 519 744 8005

#### Independent sales consultant offices

---

Italy  
ph: +39 (0) 2 9902 1161

#### Worldwide offices

---

Australia  
ph: +61 (0) 7 3624 4888

Brazil  
ph: +55 (11) 2548 4753

China (Beijing)  
ph: +86 10 6561 0240

China (Shanghai)  
ph: +86 21 6278 7708

Eastern Europe and  
Russian Federation  
ph: +36 (0) 1 47 48 100

France  
ph: +33 (0) 1 41 21 44 04

Germany  
ph: +49 2161 664540

India  
ph: +91 (080) 6708 9999

Japan (Tokyo)  
ph: 81 3 3599 7481

Korea (Seoul)  
ph: +82 2 702 1601

Republic of South Africa  
ph: +27 (0)11 510 0094

Singapore  
ph: +65 6877 8737

Spain  
ph: +34 91 633 9990

United Arab Emirates  
ph: +971 4 3206688

United Kingdom  
ph: +44 (0) 118 977 8000



For the most current specification information, please visit [www.christiedigital.com](http://www.christiedigital.com)

Copyright 2014 Christie Digital Systems USA, Inc. All rights reserved. All brand names and product names are trademarks, registered trademarks or tradenames of their respective holders. Christie Digital Systems Canada Inc.'s management system is registered to ISO 9001 and ISO 14001. Performance specifications are typical. Due to constant research, specifications are subject to change without notice. Printed in Canada on recycled paper. 3825 Jun 14

**CHRISTIE®**