

# CINEMA TECHNICAL NEWS

Welcome to the Christie® Cinema Technical News, designed to keep you up-to-date with the latest firmware, technical bulletins, manuals, tech news, tips, and tricks.

Want to invite other members of your team to join? Share the link to our signup and archive page:

<https://www.christiedigital.com/lp/cinema-tech-newsletter-archive/>

## How to determine divergence in CineLife and CineLife+ projectors

### Details -

Convergence errors between red, green, and blue colors on the screen can be noticed in any 3 chip DLP projectors. Due to the characteristics of red wavelength passing through the prism, the red image will be slightly larger than green and blue images. To remedy this, please refer to the Christie setup manual for specifications on convergence adjustments.

### Resolution -

Follow the Christie setup manual for alignment and configuration specifications per the affected model.

Convergence specifications for 2K cinema projection is 1/4 pixel width at image center and 1/2 pixel width on the sides of the image. Convergence specifications for 4K cinema projection is 1/2 pixel width across the entire image.

Perform mechanical convergence prior to enabling Electronic Color Convergence (ECC) on CineLife+ projectors for the best outcome.

ECC is dependent on ILS settings due to the position of the glass elements in the lens barrel.

Did you know that all CineLife+ projectors have Electronic Color Convergence built in? ECC provides the ability to easily apply minor convergence corrections to each color individually using true 2-dimensional warping to account for vertical, horizontal, and twist corrections. ECC is tied to the lens file for discrete adjustments at each zoom setting.

Please refer to the specific model's service manual for guidance on proper mechanical and electronic adjustment.

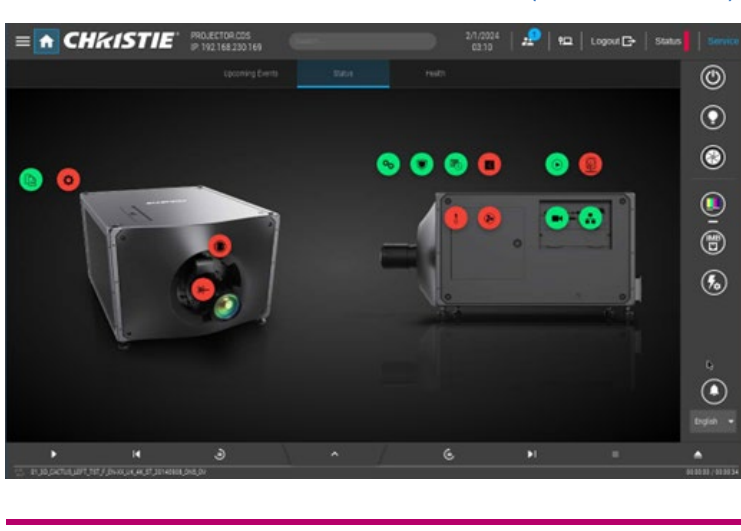
For more details, contact our Christie technical support at [cinema.support@christiedigital.com](mailto:cinema.support@christiedigital.com)

## Navigate the new CineLife+ UI

### Details -

CineLife+ software version 2.0 includes a major software upgrade that includes a new multi-user, multi-lingual interface for each individual login on the projector. This new interface includes new dynamic UI scaling, search features, status dashboard, and upload/download process (directly from the web based UI).

For more information please refer to the Christie tech bulletin for [CineLife+ software version 2.0 \(020-200562-01\)](#)



## How to clean and replace washable filters on CineLife and CineLife+ projectors

### Details -

We made cleaning and replacing washable filters easy. Follow our [video](#) and [tech bulletin](#) for clear, concise instructions.

## The PIB-03 is a direct replacement for the PIB-01 and PIB-02

### Details -

In our continued engineering efforts to ensure Solaria projectors meet the operational needs of exhibitors, we developed the PIB-03 which can replace a faulty PIB-01 or PIB-02 where an SDI input is not required.

## Resolving touch panel error message "Subtitles Enabled False"

### Details -

When playing subtitles content with a Dolby IMS3000 on a CineLife+ projector, the touch panel may display an error message that reads, "Subtitles Enabled False", which causes the subtitles to not display on screen.

This error occurs when you attempt to use the projector to render subtitles during IMS3000 playback.

CineLife+ projectors do not support projector-rendered subtitles. The subtitles must be rendered by the IMB.

### Resolution -

To prevent the IMS3000 from attempting to use the projector to render subtitles, follow these steps:

- In the IMS3000 Device Manager, find the "Projector" device
- Set the "Enabled subtitles" radio button to "No". This will disable projector rendered subtitles

Note: this option only works if the IMB expects the projector to render the subtitles. Do not set the CineLife+ "Enabled subtitles" radio button to "Yes".

To enable IMS rendered subtitles, the user must add a "Subtitle Engine" device. If this device is present and enabled, it automatically disables the projector rendered subtitles. For instructions on adding a subtitle engine on the IMS3000, see the IMS3000 User Manual.

## Restoring a CineLife projector that fails to boot into standby mode

### Details -

When the projector fails to boot into standby mode and the touch panel displays "Error sending End of Post message to ME, System Halt".

### Resolution -

This error occurs because of hardware failure of the F-Main. When the F-Main is replaced, ensure the CFast Card is transferred from the original, defective F-Main to the new replacement F-Main. This ensures the entire configuration is retrieved for ease of projector operations.

## How to reset language settings on CineLife series projectors

### Details -

When connected to projectors using VNC, pressing the function(fn) and F11 keys will change the language to Spanish. This will be captured in the projector logs, but there will be no indication of the change.

### Resolution -

Manually navigate to the projectors language settings as follows:

Click menu => Login with service level credentials => go to Menu => Service Setup (3rd selection from bottom) => Preferences (4th icon from top) => General (1st selection from top) => Under Systems (2nd sections) choose the preferred language.

### Latest software releases:

[CineLife v2.7.5](#)

[CineLife+ v2.2.1](#)

### TRAINING CENTER



Find the courses you need in the Christie University course catalog

### Access our online training courses:

Projector Maintenance

Laser Safety Awareness

Photon LOS Alignment booth Safety (webEX)

Christie NAS-S3

RealLaser Light Source

RealLaser and CineLife Safety

Solaria 4K

and many more

### WATCH OUR USEFUL VIDEOS



Log into [Christie University](#) and search for these helpful videos:

Configuring a Christie NAS-S2 for GDC SR-1000 IMB

CP2309/RGB CP2315/RGB LOS removal

CP2309/2315/2320-RGB Optical adjustment

CP4415-RGB & CP4420-RGB Filter replacement

CP4440-RGB & CP4450-RGB LOS removal

CP4450-RGB Chiller Setup

### TECHNICAL BULLETINS



Download the latest Technical Bulletins.

[Screen file cropping when playing HFR content on 4K Series 3 projectors](#)

[IMB-S3 invalid certificates](#)

[Recovering a faulty projector intelligence board](#)

[Configuring the Netgear Ready NAS 2100 for the GDC SR-1000 IMB](#)

### USER MANUALS



[Service manual for CP2309-RGB, CP2315-RGB, and CP2320-RGB](#)

[Service manual for CP2308](#)

[Service manual for CP4445-RGB and CP4455-RGB](#)

[RGBe installation and setup guide](#)

[PM schedule for CP2420-Xe and CP4420-Xe](#)

[PM schedule for CP2415-Xe](#)