

---

# UPGRADE INSTRUCTIONS

---

## Firmware Upgrade

**Applies to the following projectors:** LWU505, LW555, LX605, LX505

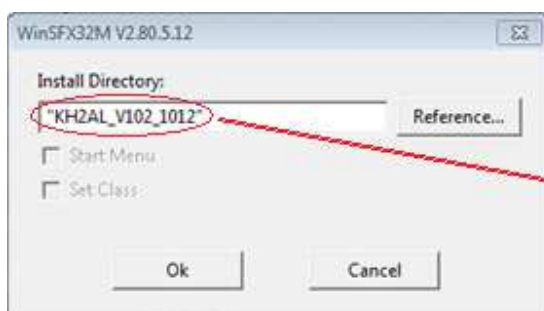
---

## Upgrade Files

Projector Model	Upgrade file for Chassis # <b>00</b>	Upgrade File for Chassis # <b>01</b>
LWU505	KH2AL_V103_1013.exe	KH2AM_V203_1016.exe
LW555	KK8AL_V104_1013.exe	KK8AM_V204_1014.exe
LX605	KA8AL_V105_1021.exe	KA8AM_V204_1023.exe
LX505	KZ5AL_V105_1021.exe	KZ5AM_V204_1023.exe

## Upgrade Procedure

1. Connect the PC to the projector via RS-232C.
2. Store the relevant executable file above on the computer desktop and start it.
3. When the following window appears, specify where the folder should be stored. If no location is specified, it will be placed on the desktop.

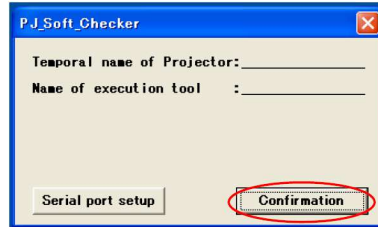


By default, the directory name will match the file name as listed in section "Upgrade Files" above

4. The following files will be extracted:
  - PJ\_Soft\_Checker.exe
  - kasho.txt
  - FlashUpgrader.exe
  - XM150\_FlashAllWithoutBootCode.inf
  - appcode.hex
  - flasher.hex
  - osddata.hex
  - XM150\_FPGAcode.hex

5. When the following window appears, check the POWER LED and LAMP LED are on before clicking Confirmation.

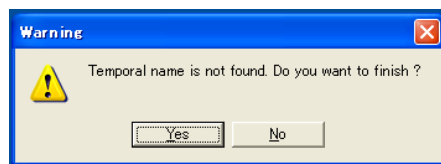
NOTE: For the modes with Standby mode in the Setting menu, check the Standby mode is set to [Network] or [Serial].



- If the following message appears when you click confirmation, check the wire-connection and the status (stand-by mode) of projector.

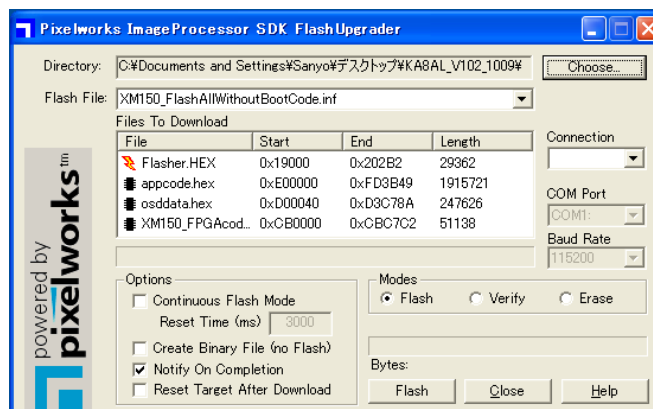


- If the following message appears when you click confirmation, check if there are mismatches between projector and program.



6. The FlashUpgrader.exe execution tool will start and the following window will appear.

NOTE: The baud rate field displayed below in the Flash Upgrader application cannot be changed. The baud rate for the computer and the projector must both be set at **19200**.



7. Pull out the power cable, and then plug the power cable in again while at the same time pressing the Power key and the Select key. The LAMP LED, POWER LED and WARNING TEMP LED will light up to indicate the transition to the writing condition.

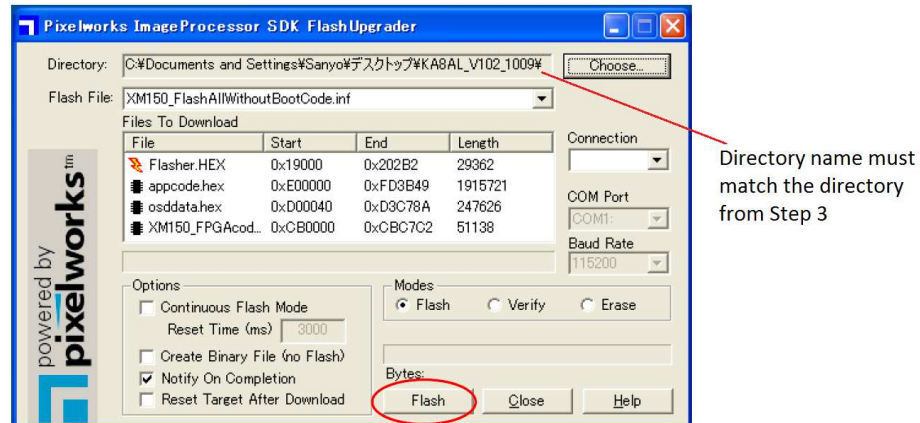
NOTE: On some models, only the LAMP LED and WARNING TEMP LED light up. The POWER LED does not light up. In these cases, continue with the upgrade.

If the WARNING TEMP LED does not light up, restart from the beginning of this step, after pulling out the power cable.

8. Click Choose and select the file **XM150\_FlashAllWithoutBootCode.inf**.

NOTE: Check the folder matches the name of the FW to be upgraded (e.g. KH2AL\_V102\_1012), as the XM150\_FlashAllWithoutBootCode.inf of another folder may be set from a previous upgrade.

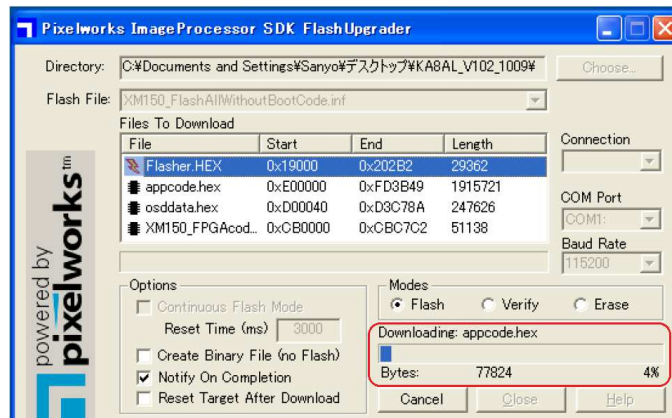
9. Verify the folder name and click Flash.



- If the writing does not start when you click Flash, click Cancel and retry from step 7.
- If the following message appears, close all other applications. If there are still issues, check the wire-connection and the status (stand-by mode) of the projector.



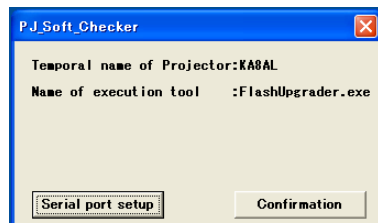
10. The upgrade will start, and progress will be shown on the upgrade progress window:



11. After the writing is completed, click OK on the following window.



12. Click Close on the upgrade progress window.
13. The following window appears. To do further upgrades, replace the projector and repeat from step 5. If finished, close this window.



**NOTES:**

- The upgrade has to be done with the projector in stand-by mode.
- To repeat the upgrade procedure later, execute **PJ\_Soft\_Check.EXE**. Then follow from step 5.