

D

C

B

A


D

C

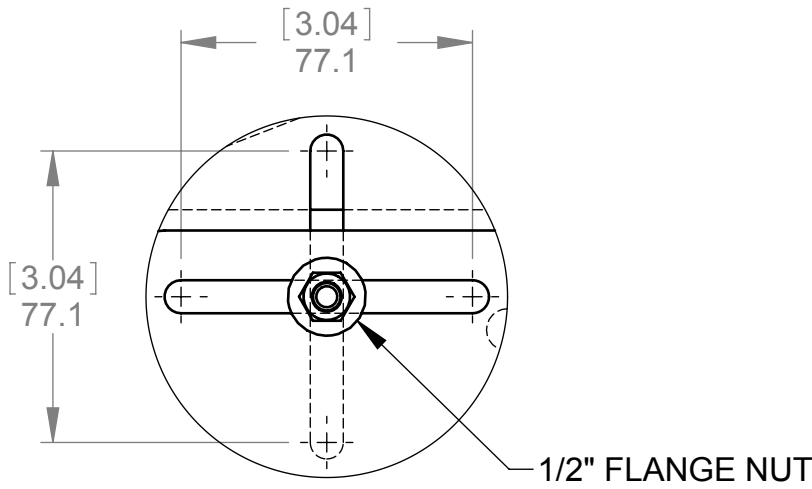
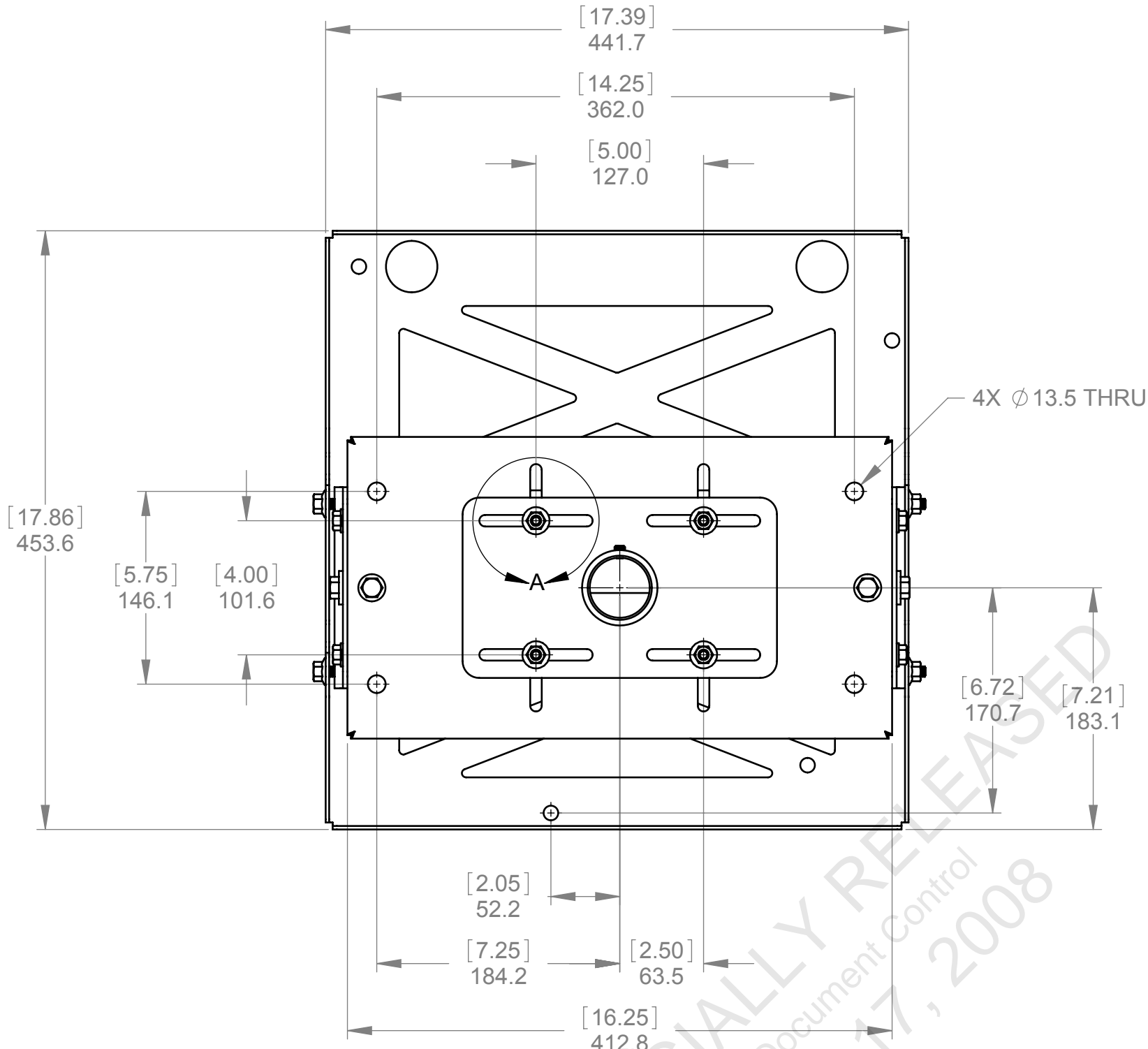
B

A

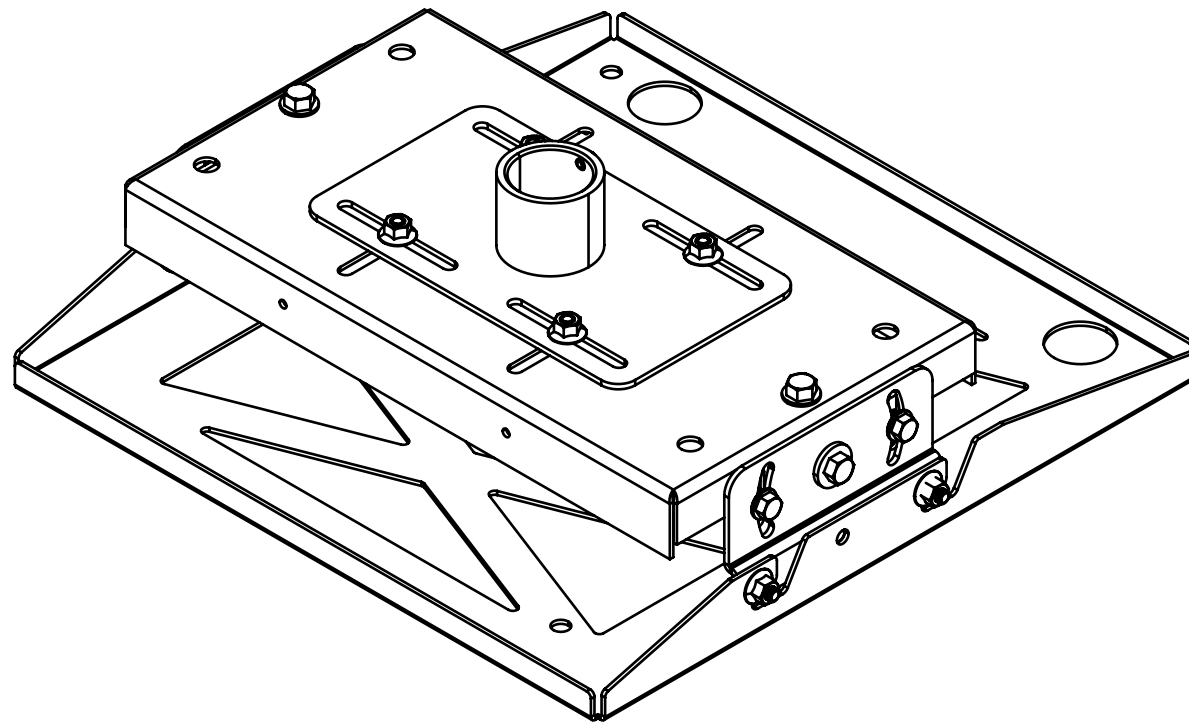
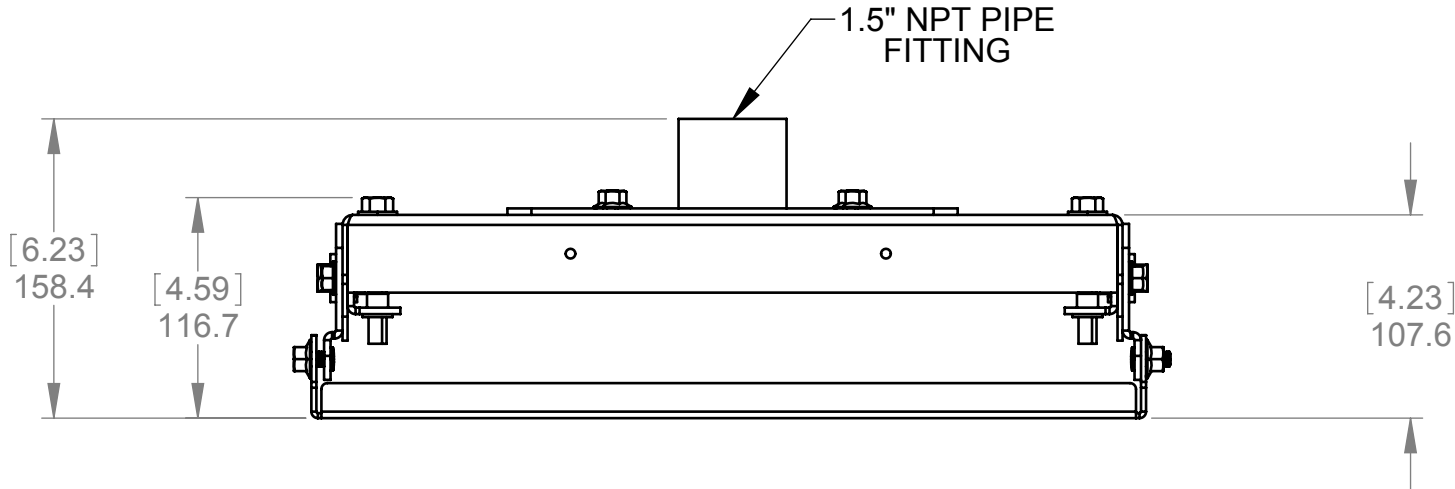
NOTES:

1. ALL MATERIALS AND PROCESSES MUST CONFORM TO ROHS AS SPECIFIED IN 010-100594
2. PACKING FILLERS, BOXES AND LABELS MUST BE MANUFACTURED ACCORDING TO CHRISTIE DIGITAL SYSTEMS STANDARD # 010-101136-01: " PACKAGING LABELING AND MATERIAL GUIDELINE "
3. REFER TO SUPPLIER QUALITY STANDARD 010-101164-01 FOR GENERAL QUALITY REQUIREMENTS AND PRACTICES, AND FOR CRITICAL FEATURE INSPECTION METHODS IF INDICATED WITH  ON THIS SPECIFICATION
4. NOT ALL DIMENSIONS SHOWN. REFER TO CAD MATH DATA FOR DETAILS.
5. CAD MATH DATA AND UNTOLERANCED DIMENSIONS ARE BASIC UNLESS OTHERWISE SPECIFIED

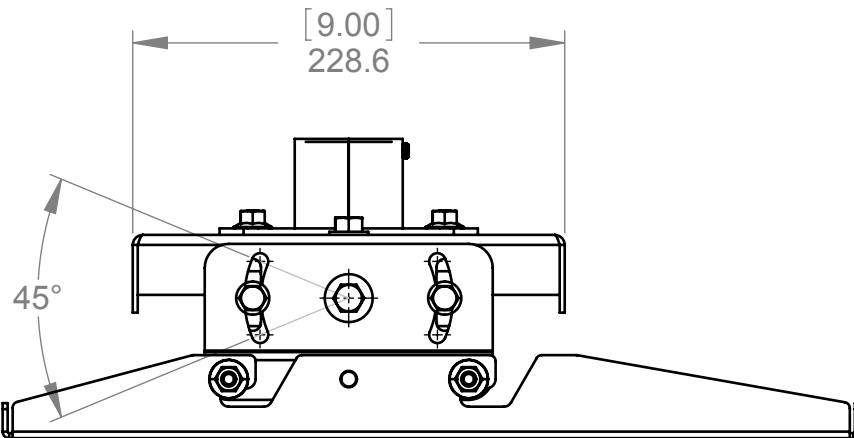
REVISION HISTORY OF: 010-101992-01			
REV	DESCRIPTION OF CHANGE	BY	DATE UPDATED
01	ORIGINAL RELEASE	KD	__/__/__



DETAIL A
SCALE 1 : 2



ISOMETRIC VIEW



NOTE:

1. X AND Y AXES MOTION SHOWN IN DETAIL A
2. 1/2" WRENCH REQUIRED FOR ADJUSTING AXES AND ANGLE POSITIONS

MECH. REF # : M025982	UNITS: MILLIMETRES	CAD MAINTAINED DATA CHANGES SHALL BE INCORPORATED ELECTRONICALLY	CHRISTIE DIGITAL SYSTEMS USA, INC.
USED ON: M-SERIES	UNLESS OTHERWISE SPECIFIED INTERPRET DIMENSIONS AND TOLERANCES PER ASME Y14.5M-1994 ALL DIMENSIONS SHOWN APPLY BEFORE PLATINGS AND COATINGS TOLERANCES APPLY AS SHOWN BELOW	DRAWN BY K. DITNER	CHRISTIE DIGITAL SYSTEMS CANADA, INC.
MATERIAL: NOT APPLICABLE	DECIMAL PLACES INCHES MILLIMETRES .XXX ± .005 ± 0.1 .XX ± .010 ± 0.3 .X ± .020 ± 0.5	DRAWN DATE 2008-09-26	PART DESCRIPTION DWG CEILING MOUNT M-SERIES
DEBURRING: BREAK ALL SHARP EDGES FOR SAFE HANDLING	ANGULAR DIMENSIONS XX° ± 0.5° XX.X° ± 0.1°	PROPRIETARY NOT TO BE DISCLOSED OR REPRODUCED IN ANY MANNER WITHOUT THE EXPRESS WRITTEN PERMISSION OF CHRISTIE	SIZE C
FINISH: NONE	SURFACE ROUGHNESS 63 1.6	THIRD ANGLE PROJECTION	REVISION 01
COATING: NONE			SCALE 1:4
I.D.: NONE			MASS N/A
SIMILAR TO: NONE			SHEET 1 OF 1