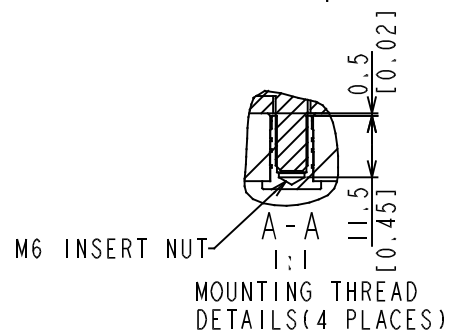
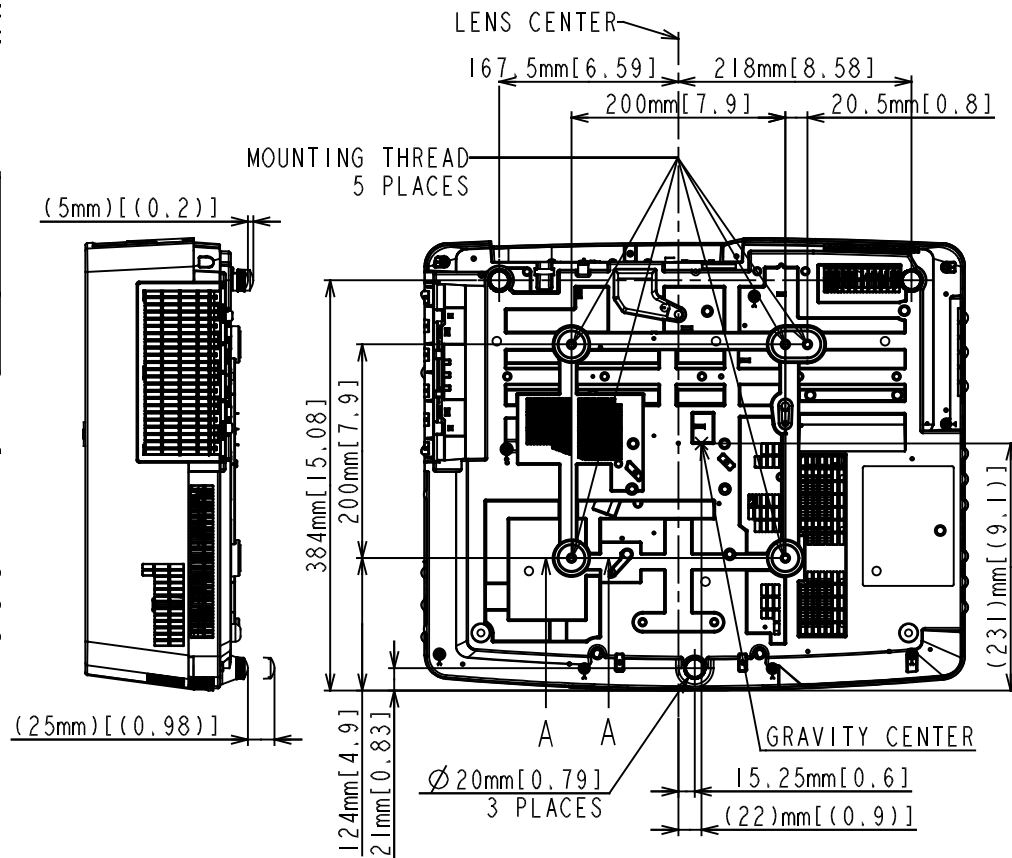
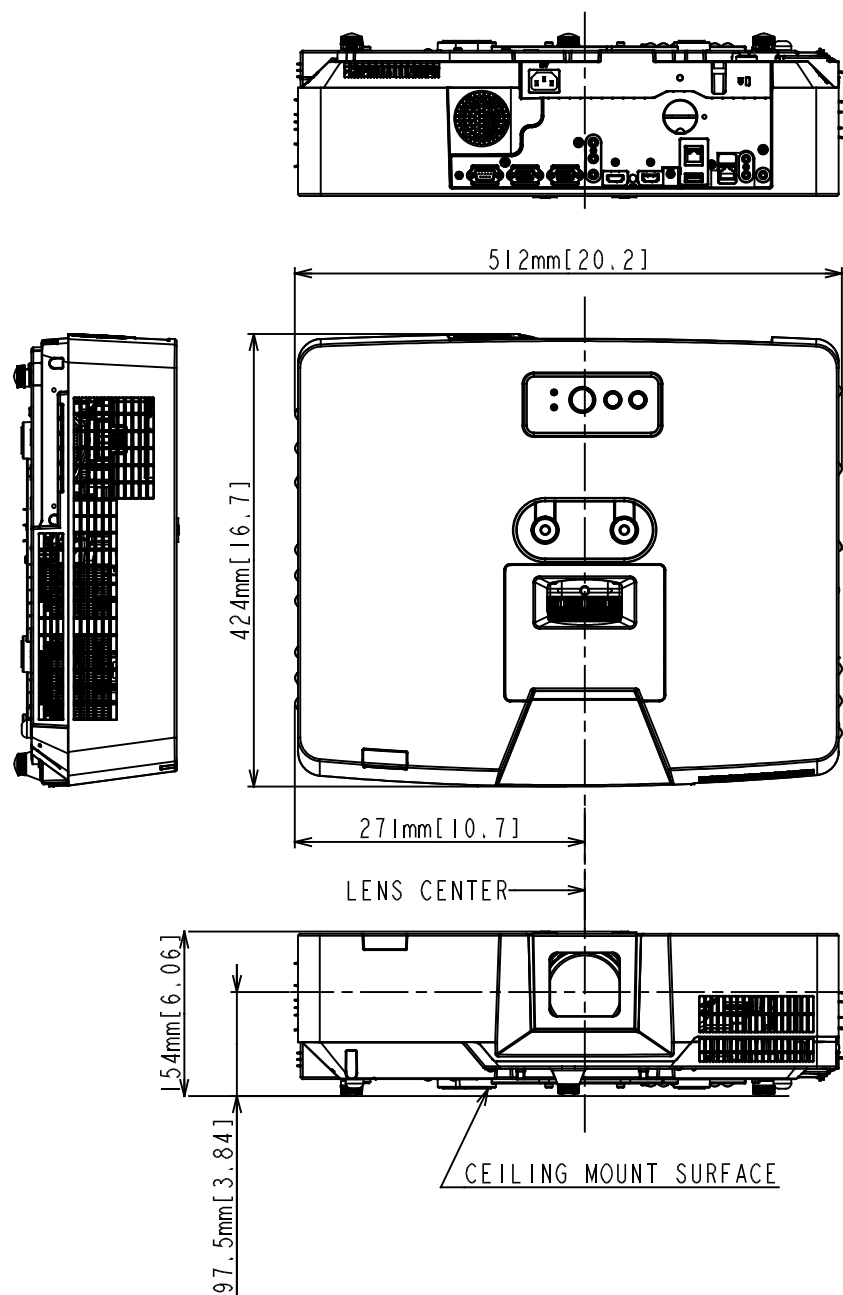
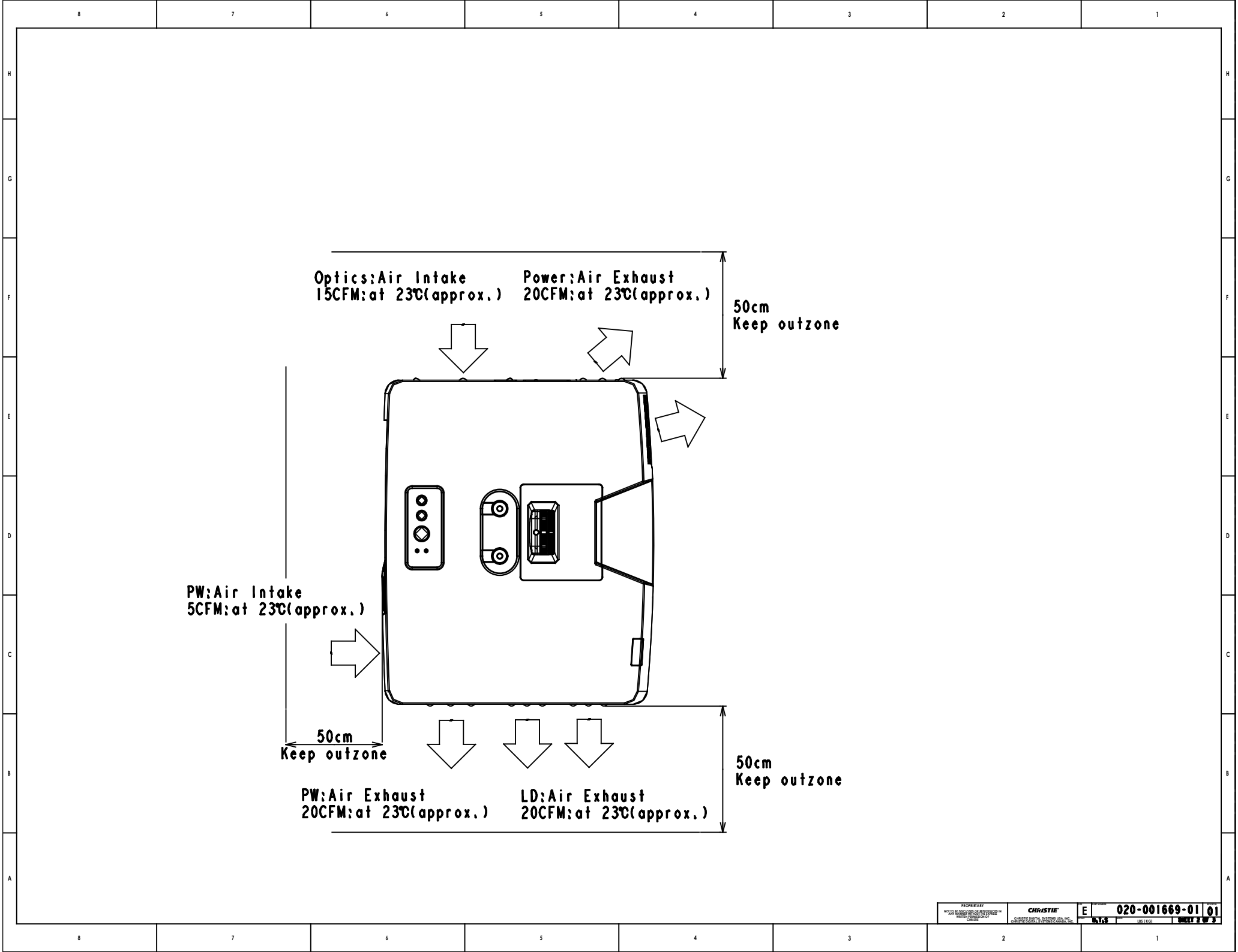


REVISION HISTORY OF:			
REV	DESCRIPTION OF CHANGE	BY	REV DATE
01	INITIAL RELEASE	S. KIM	12/11/18



UNIT:mm[inch]

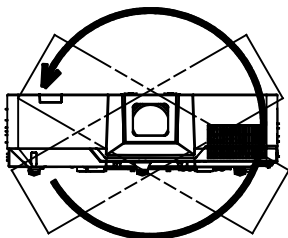
UNITS: MILLIMETER [INCH] <input checked="" type="checkbox"/> UNLESS OTHERWISE SPECIFIED DIMENSIONS ARE IN MILLIMETERS TOLERANCES APPLY AS SHOWN BELOW		FINISH: SURFACE: TYP: DATE:	PROJECT: DRAWN: CHECKED: DATE:	REVISION: BY: DATE:	CHKISTIE® CHRISTIE DIGITAL SYSTEMS USA, INC. CHRISTIE DIGITAL SYSTEMS CANADA, INC.
DWG Line APS Series		E 020-001669-01		01	SHEET 1 OF 3



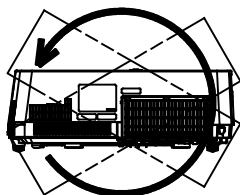
■Operating position

The LWU530-APS and LWU650-APS are designed to operate in horizontal 360°, vertical 360° and tilt 360° as shown below.

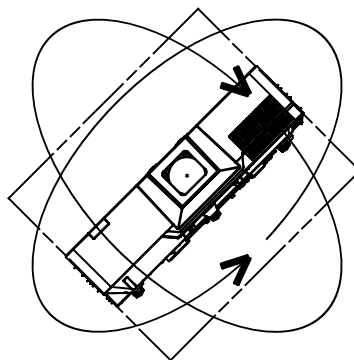
Horizontal 360°



Vertical 360°



Tilt 360° (Combination of horizontal and vertical)



■Power consumption

LWU530-APS

370W + 10% or less at 100V-120V AC

360W + 10% or less at 220V-240V AC

LWU650-APS

420W + 10% or less at 100V-120V AC

400W + 10% or less at 220V-240V AC

■Operating temperature range

Normal: 0~40°C (35~40°C; dimming)

Whisper: 0~40°C

■Operating (rated) voltage ranges

100-120 V AC, 220-240 V AC

■AC line frequencies

50Hz-60Hz nominal

■Product weight

LWU530-APS: 8.3kg (18.3lb)

LWU650-APS: 8.6kg (19.0lb)