

Installing the Jazz and Korus Series 0.34-0.37 UST lens

This document provides information on how to install and disassemble the Jazz and Korus Series 0.34-0.37 ultra-short throw (UST) lens (P/N: 140-164102-XX).

Affected products

The following products are affected:

- Christie DWU1800(A)-JS
- Christie DWU2400(A)-JS
- Christie 4K1600(A)-JS
- Christie 4K2100(A)-JS
- Christie 4K1400(A)-KS
- Christie 4K1000(A)-KS

Required components

Due to the shape of the Jazz and Korus Series 0.34-0.37 ultra-short throw (UST) lens, the following tools must be used for installation and disassembly to avoid equipment and property damage.

- Jazz and Korus Series 0.34-0.37 ultra-short throw (UST) lens (P/N: 140-164102-XX)
- Boresight extender (quantity 4)
- L-shape socket tool
- 4 mm hex key wrench
- Hanging slope S-type

Installing the lens

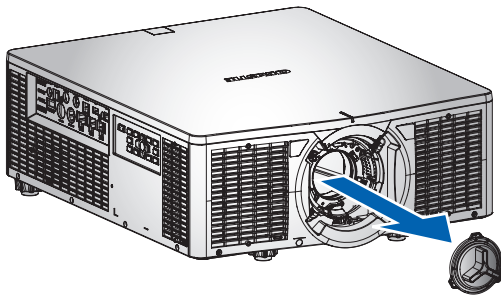
Follow these steps to install the Jazz and Korus Series 0.34-0.37 ultra-short throw (UST) lens.



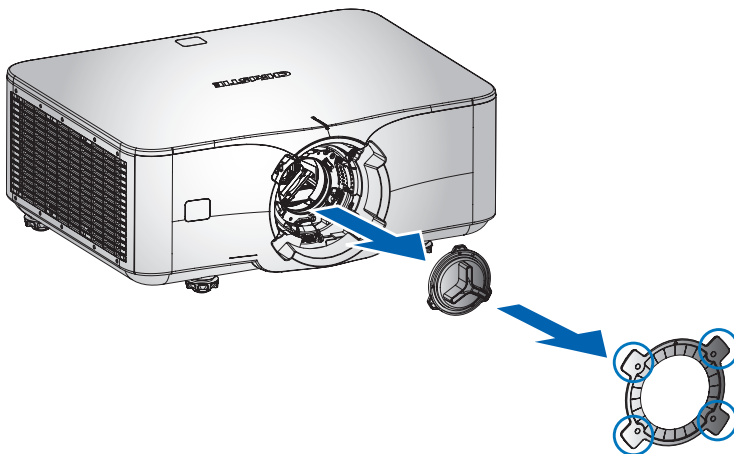
Warning! If not avoided, the following could result in death or serious injury.

- When installing the lens, make sure to follow the specified steps to prevent the lens from detaching from the projector, which could result in personal injury.
- When handling the projector after lens installation, make sure the front lens cap is placed on the lens to protect the lens surface from potential damage.
- When carrying or moving the projector, do not handle by the lens. This may damage the lens, the chassis, or other mechanical parts within the projector.

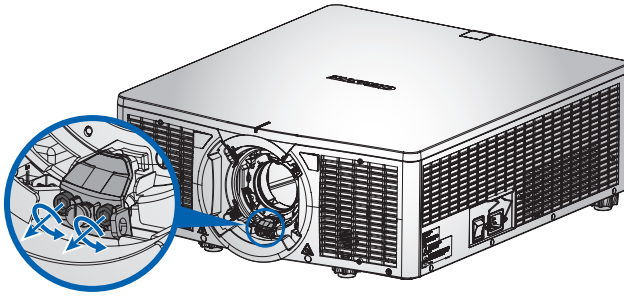
1. Turn off the projector and remove the power cord, before installing or replacing a lens.
2. Remove the dust cover from the lens opening.



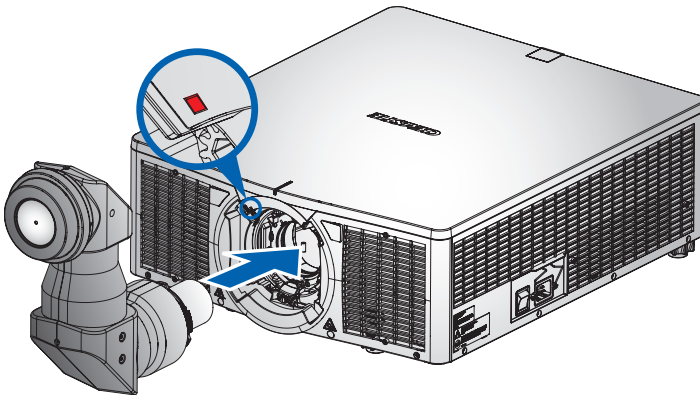
For the Korus Series, the dust cover and rubber ring must be removed before installing the UST lens. To remove the rubber ring, gently detach it starting from the four corners in sequence. The four corners are more firmly secured than the rest of the ring so do not pull on other parts of the rubber ring to avoid damage.



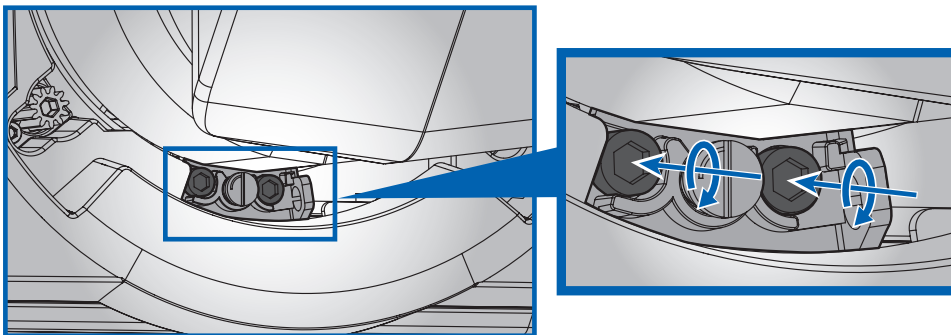
3. Release the two screws on the lock plate on the projector.
If the lock plate screws are not released, the lens cannot be installed successfully.



4. To avoid damage to the projector and lens, remove the rear lens cap before installing or replacing a lens.
5. Align the top of the lens with the red marker on front cover.



6. Insert the lens into the projector and rotate it clockwise until you hear a clicking sound.
7. Re-tighten the lock plate screws.
If the lock plate screws are not re-tightened, an error message appears when turning on the projector indicating the lens did not lock properly and the lock plate must be checked.



8. To prevent damage to the lens, remove the front lens cap before turning on the projector.

Calibrating the lens motor

Make sure the lens motor is calibrated before using the projector. Failure to calibrate the lens motor properly may cause following issues.

- Inability to use the full range of the lens motor
- Lens motor traveling beyond the lens shifting range
- Damage to the projector

Calibrate the lens motors when any of the following conditions are met:

- After a lens change
- After the projector is moved
- After any manual adjustment made to the zoom or focus

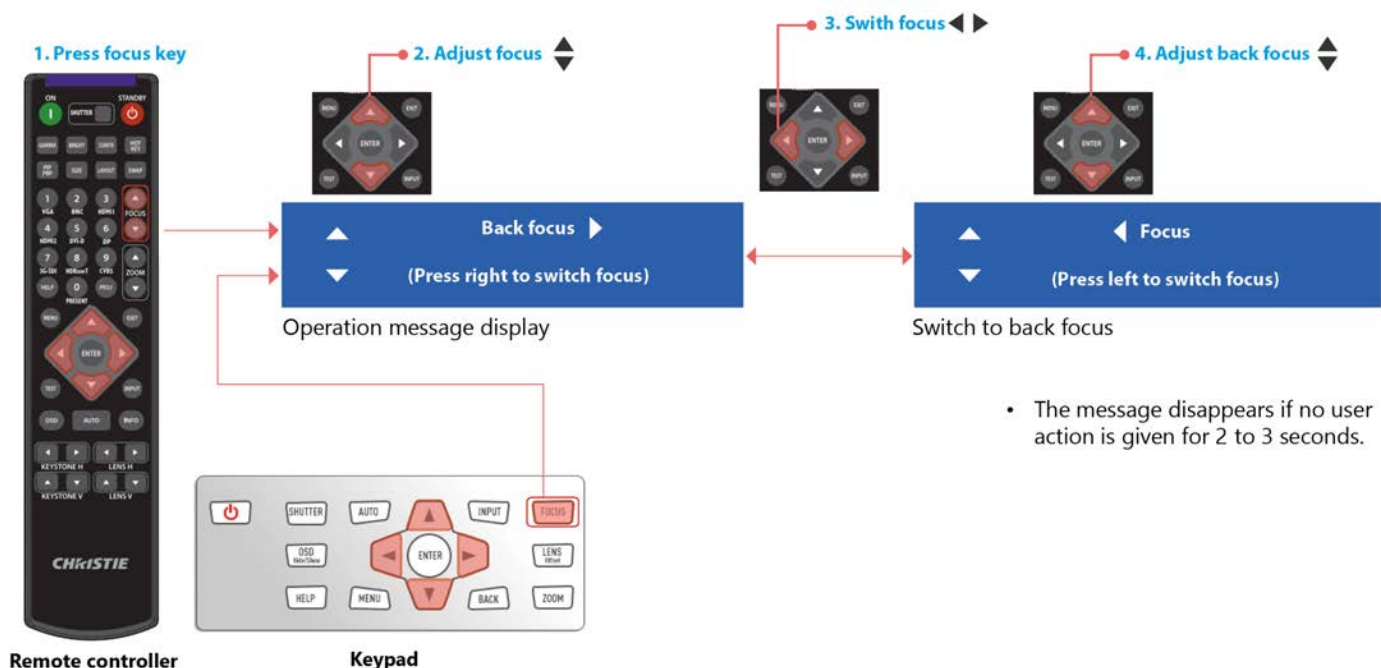
To calibrate the lens motor, complete the following steps:

1. Select **LENS** on the display keypad or **LENS H/LENS V** on the remote keypad.
You can also select **Menu > Configuration > Lens Settings > Lens Calibration**.
2. Select **ENTER**.
3. To start the lens calibration, select **OK**.

Operating the lens

To achieve optimal performance, the Jazz and Korus Series 0.34-0.37 ultra-short throw (UST) lens is equipped with two focus motors that can be adjusted using the remote keypad or display keypad:

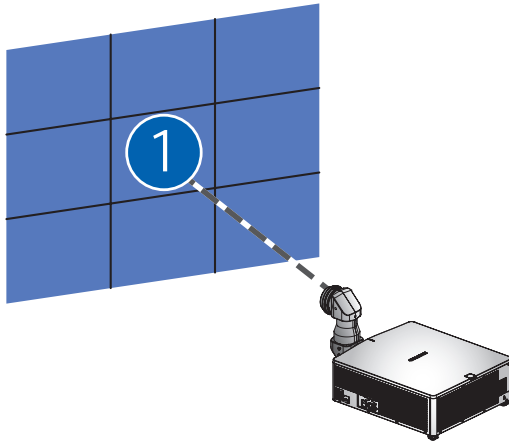
- Back Focus: Adjusts the entire screen focus (center and corners).
- Focus: Primarily adjusts the corner focus (the center may shift slightly).



To adjust the focus, complete the following steps.

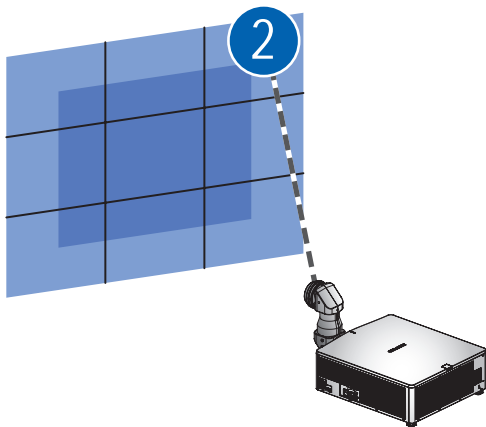
1. Select **Back Focus** to adjust the entire image (①).

Focus on the part of the image closest to the lens, usually the center of the screen.



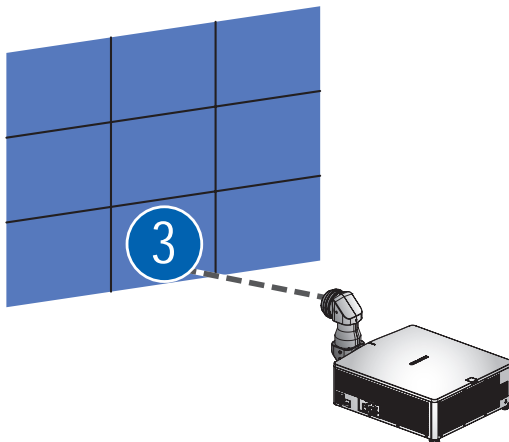
2. Select **Focus** to adjust the surrounding area (②).

Focus on the part of the image farthest from the lens, typically the corners of the screen.



3. Select **Back Focus** again to fine-tune the overall focus (③).

Restore the balance between the center and the surrounding area.



4. If the image is still not clear, repeat steps 1 to 3 until both the center and corners are in focus.

Removing the lens from the projector

To safely remove the Jazz and Korus Series 0.34-0.37 ultra-short throw (UST) lens, complete the following steps.



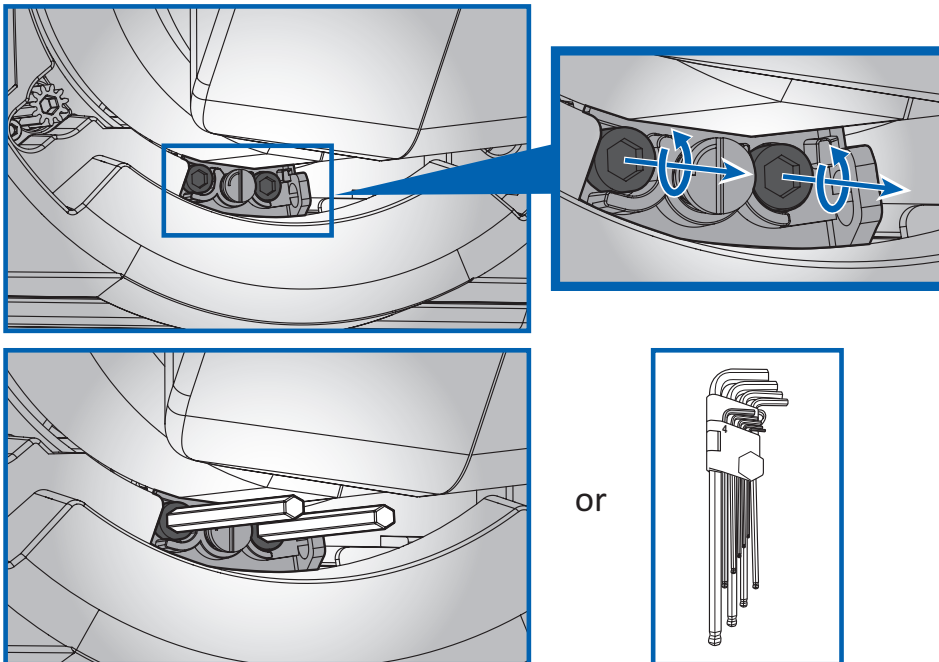
Notice. If not avoided, the following may result in equipment or property damage.

- Always use a lens cap when installing or moving the product. This prevents contaminants from entering the product.
- Do not operate the product without a lens installed.

1. Center the lens while the projector is switched on by selecting the **LENS H** or **LENS V** button and then selecting **ENTER**.

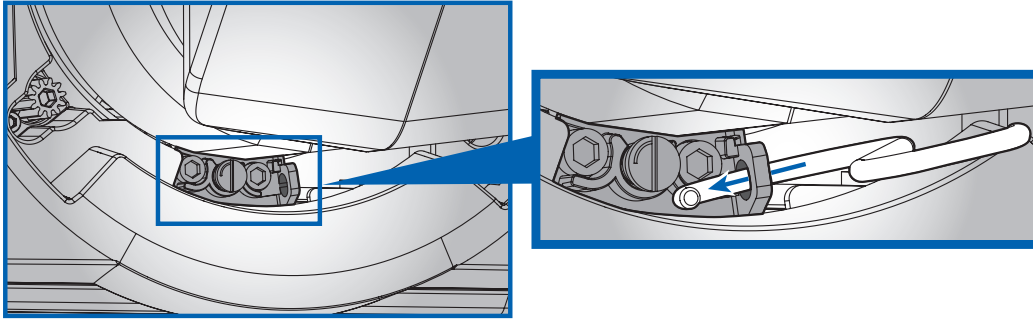
Make sure the lens is at or near its center position. Attempting to remove the lens with a large offset may cause damage to the lens assembly.

2. Turn off the projector.
3. Allow the projector to cool down into Standby mode before removing the lens.
4. After the projector has cooled and prior to removing the lens, disconnect the power cord.

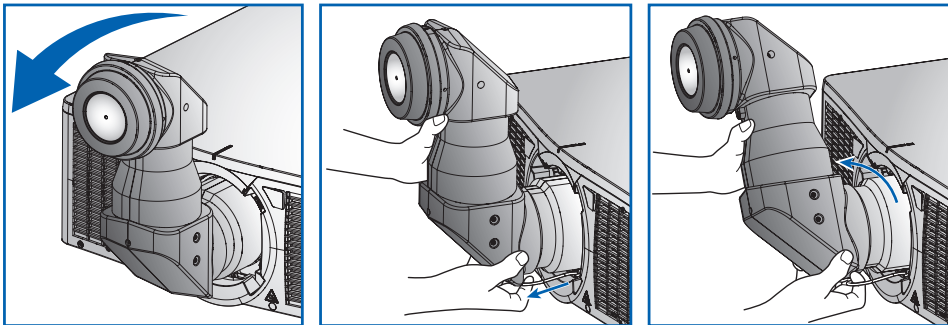


5. Release screws of the lock plate.
For better access, use an extension rod or long-handled Allen wrench to release the screws.

6. Pull out the lock plate to disassemble the UST Lens.



7. Hold the lens with your left hand and support the lens bottom with your right hand.
8. Use your right-hand fingers to hook the S-shaped latch and gently pull it outward to unlock.
9. Carefully rotate the lens counterclockwise about 35 degrees with both hands to remove it.



10. Gently pull the lens out of the lens holder.
11. Assemble the rubber ring and dust cover back to projectors.

Technical support

Technical support for Christie Enterprise products is available at:

- North and South America: +1-800-221-8025 or Support.Americas@christiedigital.com
- Europe, Middle East, and Africa: +44 (0) 1189 778111 or Support.EMEA@christiedigital.com
- Asia Pacific (support.apac@christiedigital.com):
 - China: +86 10 6561 0240 or tech-supportChina@christiedigital.com
 - India: +91 (80) 6708 9999 or tech-India@christiedigital.com
 - Japan: 81-3-3599-7481
 - Singapore: +65 6877-8737 or tech-Singapore@christiedigital.com
 - South Korea: +82 2 702 1601 or tech-Korea@christiedigital.com