

Unpacking and packing the CP4325-RGB Light Engine

The projector light engine is shipped in packaging that is designed to minimize the risk of damage during transportation.

This document outlines the steps for unpacking a new CP4325-RGB light engine, and for correctly packaging the existing light engine for return shipping.

Affected products

The following products are affected.

- Christie CP4325-RGB (P/N: 163-001102-XX)

Prerequisites

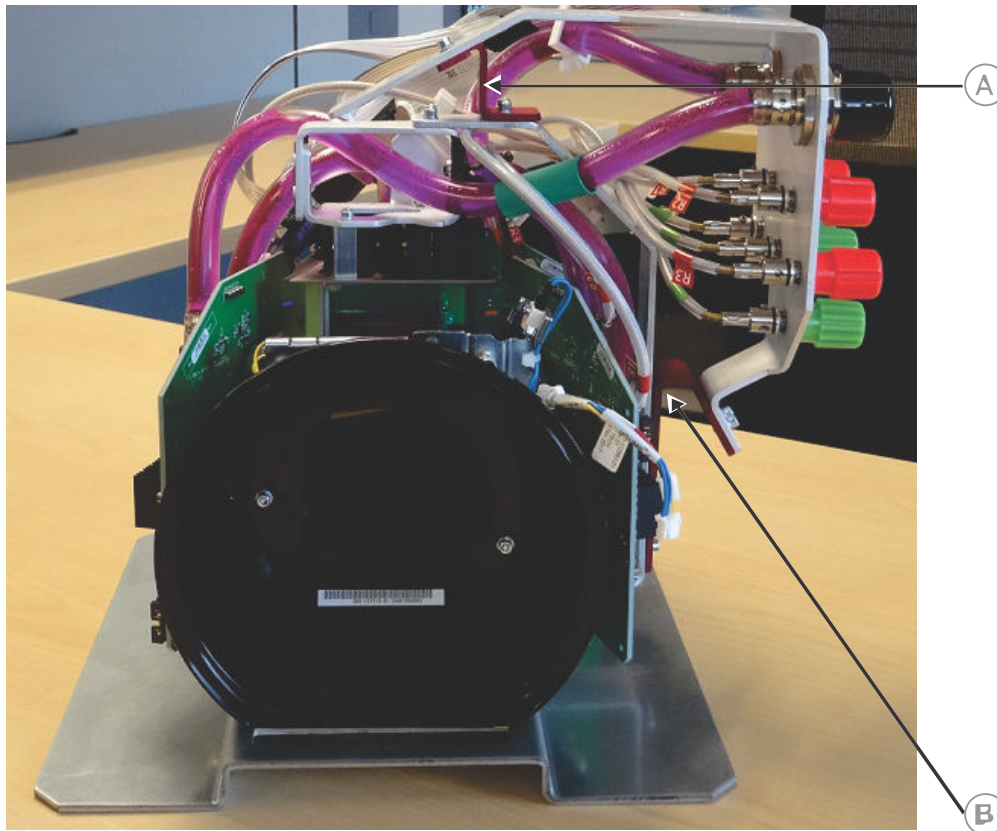
The following parts and tools are required.

- CP4325-RGB Light Engine (P/N: 003-107210-XX)
- 2.5 mm hex driver
- 3 mm hex driver

Unpacking the new light engine

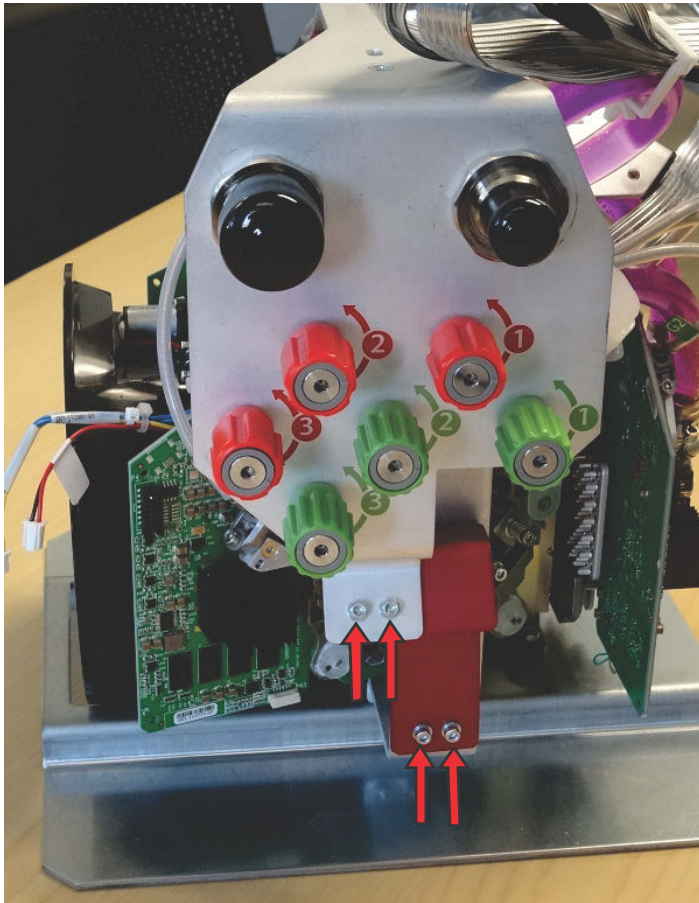
Follow these instructions to unpack the new light engine.

The light engine packaging includes two shipping brackets (red) that secure the convergence plate during transportation. The two shipping brackets must be removed before installing the light engine in the projector.

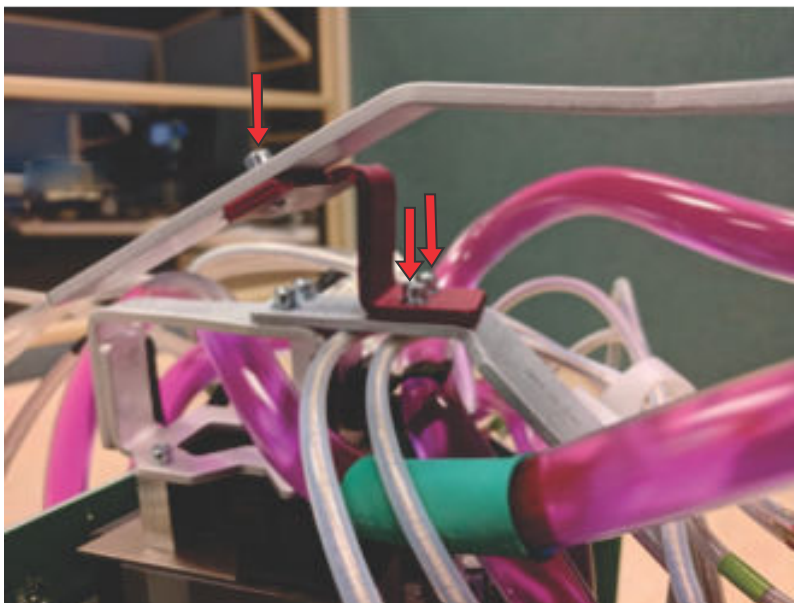


A	Top shipping bracket
B	Side shipping bracket

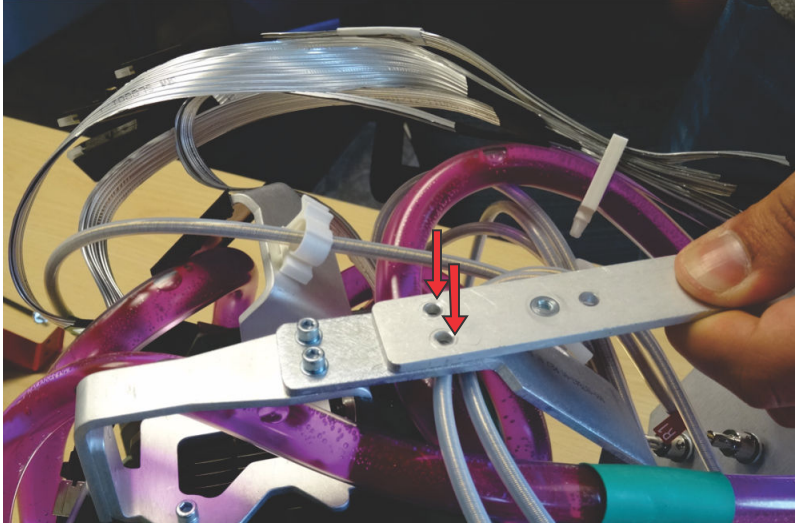
1. Remove the new light engine from the electrostatic discharge (ESD) bag.
2. Using a 2.5 mm hex driver, unscrew the four M3 screws that attach the side shipping bracket to the side convergence plate bracket and the light engine.



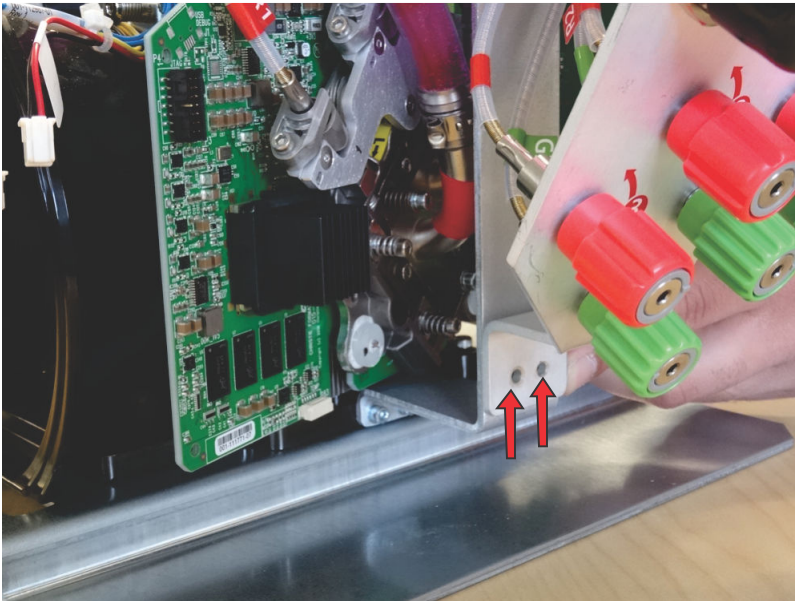
3. Remove the side shipping bracket and set it aside.
4. Using a 2.5 mm hex driver, loosen the three M3 screws on the top shipping bracket.



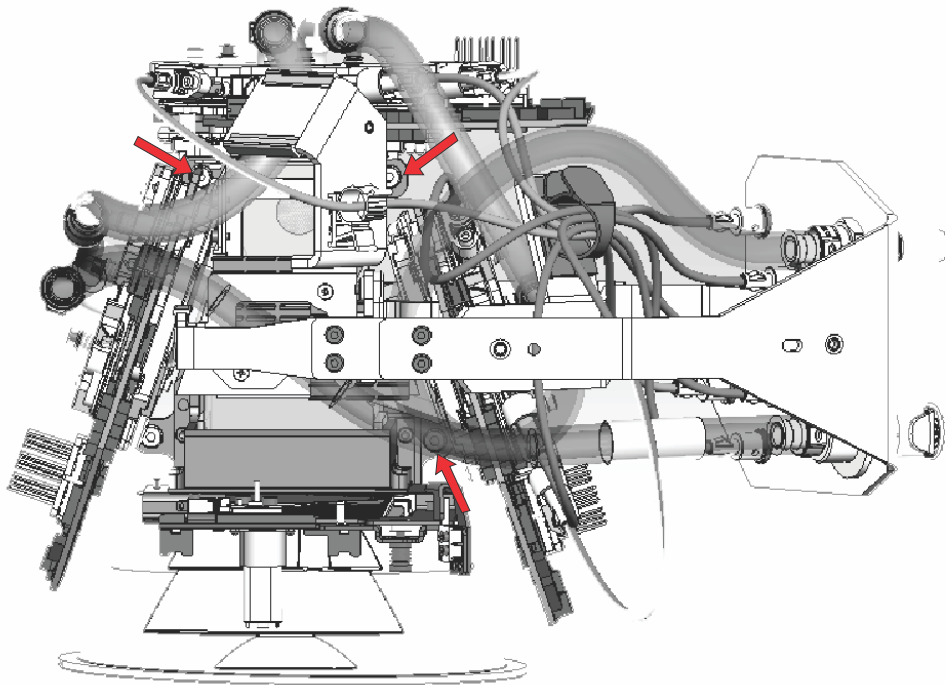
5. Hold the top convergence plate bracket and remove the three screws.
6. Remove the top shipping bracket and set it aside.
7. Align the top convergence plate bracket over the two empty screw holes.



8. Using a 2.5 mm hex driver, attach the top convergence plate bracket with two M3 screws. Tighten the screws to 8 in-lb.
9. Align the side convergence plate bracket over the two empty screw holes.

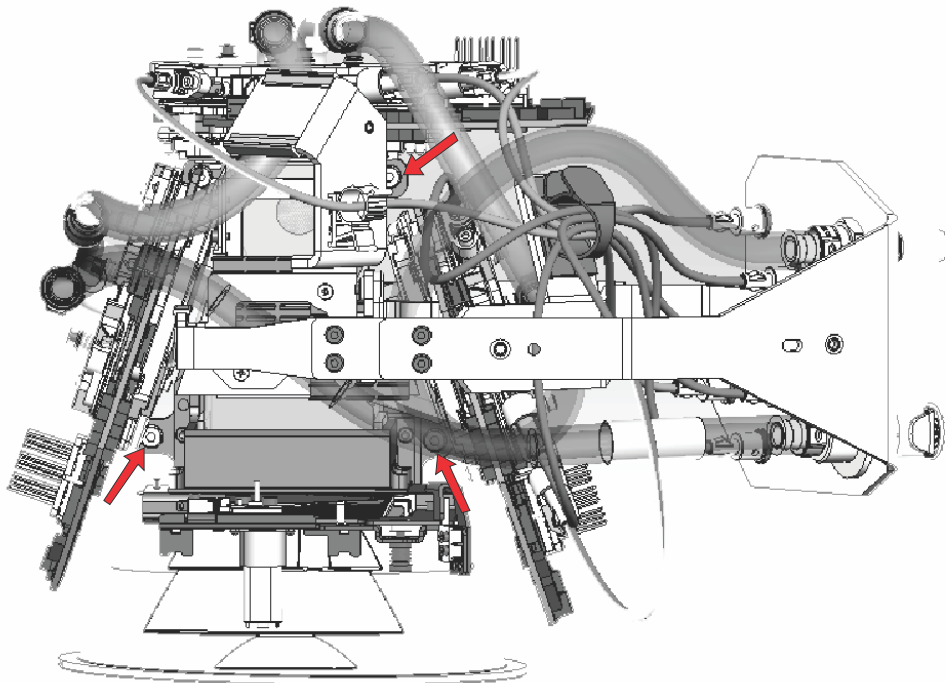


10. Using 2.5 mm hex driver, attach the side convergence plate bracket with two M3 screws. Tighten the screws to 8 in-lb.
11. Remove the temporary ties securing the light engine harnesses and hoses.
12. At the base of the light engine, use a 3 mm hex driver to detach the shipping base plate by loosening the three captive M4 screws. The M4 screws remain in the base of the light engine.



Retain the two shipping brackets, shipping base plate, and remaining M3 screws. Use the brackets, plate, and hardware to package the existing light engine for return shipment.

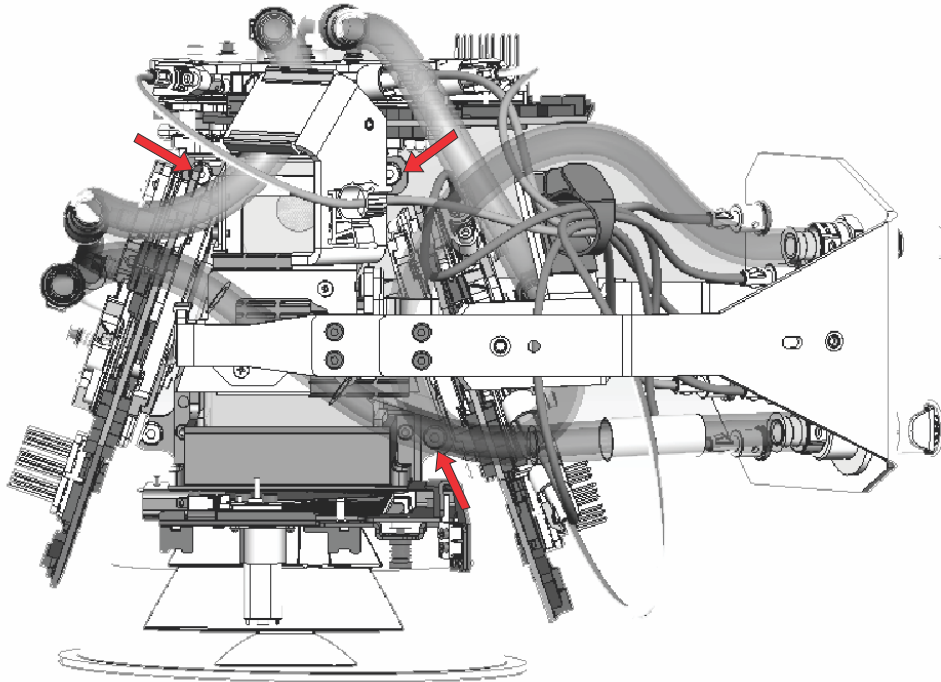
13. Insert the new light engine into the projector chassis and use a 3 mm hex driver to tighten the three captive M4 screws. Tighten the screws to 15 in-lb.



Packing the existing light engine

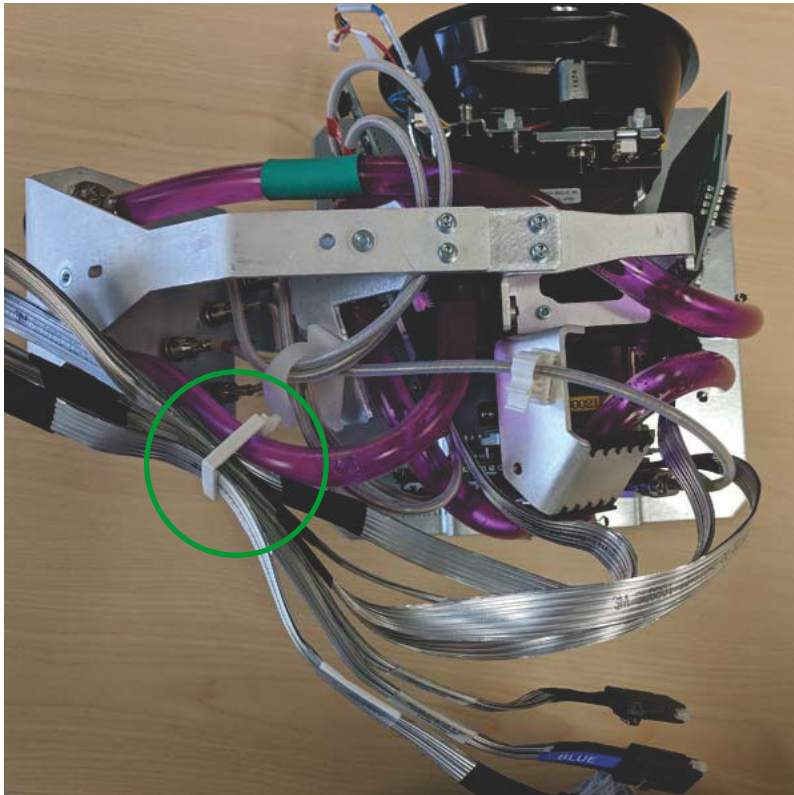
Use the shipping brackets, shipping plate, and hardware from the light engine packaging to prepare the existing light engine for return shipping.

1. Place the existing light engine onto the shipping base plate.
2. Using a 3 mm hex driver, tighten the three captive M4 screws and attach the light engine to the base plate.

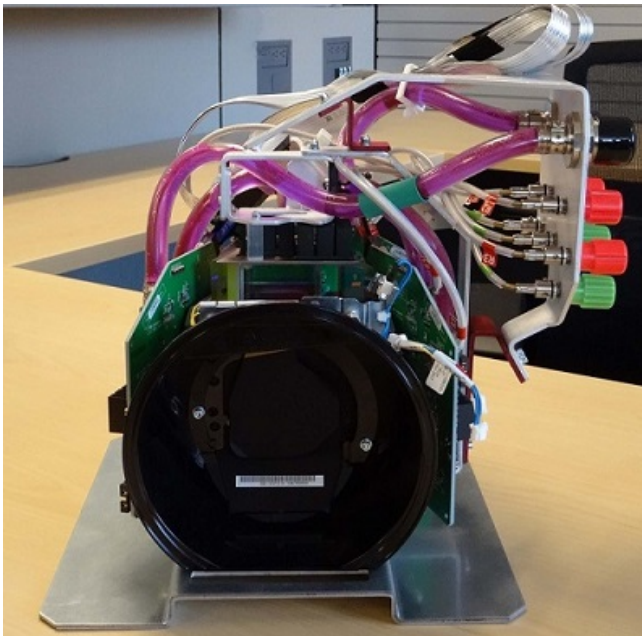


Tighten the screws to 15 in-lb to ensure the light engine does not become detached from the base plate during transportation.

3. Remove the two M3 screws from the top convergence plate bracket.
4. Remove the two M3 screws from the side convergence plate bracket.
5. To stabilize the top convergence plate bracket, align the top shipping bracket (red) with the three empty screw holes.
6. To secure the top shipping bracket, insert three M3 screws and use a 2.5 mm hex driver to tighten them. Tighten the screws to 8 in-lb.
7. To stabilize the side convergence plate bracket, align the side shipping bracket (red) with the four empty screw holes.
8. To secure the side shipping bracket, insert four M3 screws and use a 2.5 mm hex driver to tighten them. Tighten the screws to 8 in-lb.
9. Attach a zip tie to secure the light engine coolant hose and Mini SAS cables, ensuring that the hose and cables are not pinched against any part of the light engine or convergence plate.



When complete, the light engine should resemble the photograph below:



10. Place the light engine and shipping base plate assembly into the ESD bag.
11. Tape the ESD bag to seal it.
12. Place the sealed light engine into the packaging insert tray.



13. Insert the cardboard shipping sleeve into the box.



14. Place the sealed light engine and insert tray into the box.



15. Seal the box for shipment.

16. Return the packaged light engine to Christie.

Technical support

Technical support for Christie products is available at:

- North and South America: +1-800-221-8025 or Support.Americas@christiedigital.com
- Europe, Middle East, and Africa: +44 (0) 1189 778111 or Support.EMEA@christiedigital.com

- Asia Pacific: +65 6877-8737 or Support.APAC@christiedigital.com
- Christie Managed Services: +1-800-550-3061 or NOC@christiedigital.com