

CHRISTIE CORE SERIES II LED VIDEO WALL BUNDLE

The easiest way to integrate a seamless LED video wall

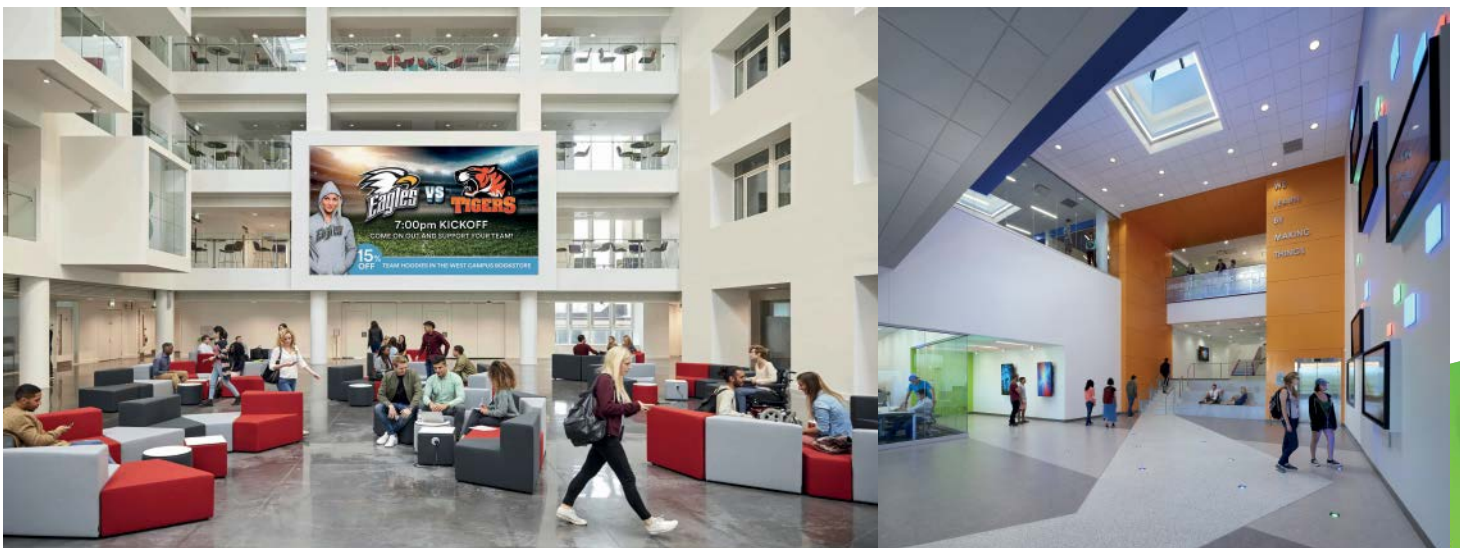
The Christie Core Series II LED video wall bundle is a complete solution that includes everything you need to easily integrate a seamless, HD-resolution video wall. Created with ultra-fine pitch Core Series II LED, this high-value video wall bundle is perfect for corporate spaces, such as lobbies, meeting and conference rooms, as well as digital signage applications like malls, convention centers, airports, and public transportation.

Simply choose the size and pitch of video wall you need, and we'll take care of the rest. We'll ensure you have everything you need—LED tiles, controllers, cabling, etc.—to quickly and easily integrate the video wall into your space. Enhance the performance capabilities of your video wall by adding any of our optional processing and content management technologies.

It's never been easier to spec an LED video wall.

Key features and benefits

- › The new Core Series II offers simple, concealed cabling for faster installation and fewer failure points
- › High-definition resolution, bright and seamless visuals with wide viewing angles
- › 100,000 hours of 24/7 operation
- › Includes necessary video wall controllers with scaling and image processing
- › Scales to common resolutions, including HD and 4K
- › Complete front access for installation and service
- › Includes slimmer ADA-compliant direct mount system (less than 100mm depth)
- › Three years parts and labor with standard limited warranty—and extended warranty available as an option
- › System level certification (UL60950)
- › Full range of optional processing and content management technologies
- › Optional assisted service and support including turnkey installation to get your video wall up and running quickly
- › On-board redundant power supply with automatic failover to maximize uptime



Christie Core Series II LED video wall bundle components

Components included	Core 0.9mm UHD bundle	Core 1.2mm HD bundle	Core 1.5mm HD bundle	Core 1.8mm HD bundle	Core 2.5mm HD bundle
Part number	• 900-300357-01	• 900-300315-01	• 900-300316-02	• 900-300317-02	• 900-300318-02
Core Series II LED tiles	• 9 x LED009-C2-I	• 16 x LED012-C2-I	• 25 x LED015-C2-I	• 36 x LED018-C2-I	• 64 x LED025-C2-I
Control unit(s)	• 1 x E510	• 1 x E510	• 1 x E510	• 1 x E510	• 1 x E510
HARN main power cables (10M)	• 2	• 2	• 3	• 3	• 3
Wall cables	• Includes main (50m) and video interconnect cables, in addition to interconnect power cables				
Spare parts	• 5% of system design recommended				
Direct-mount system	• Included				

Specifications

Technical specifications	Core 0.9mm UHD bundle	Core 1.2mm HD bundle	Core 1.5mm HD bundle	Core 1.8mm HD bundle	Core 2.5mm HD bundle	
Display	resolution	• 3840 x 2160	• 1920 x 1080			
	pixel pitch	• 0.9mm	• 1.2mm	• 1.5mm	• 1.8mm	
	brightness	• 800 nits (cd/m ²)				
	aspect ratio	• 16:9				
	contrast	• 5000:1				
	viewing angle	• 160° horizontal + 160° vertical				
	refresh rate	• >3,000Hz				
Physical	array size	• 6 x 6	• 4 x 4	• 5 x 5	• 6 x 6	• 8 x 8
	number of tiles	• 36	• 16	• 25	• 36	• 64
	wall dimensions (LxW)	• 11.81 x 6.64-ft (3.6 x 2.03m)	• 7.87 x 4.43-ft (2.4 x 1.35m)	• 9.84 x 5.54-ft (3 x 1.69m)	• 11.81 x 6.64-ft (3.6 x 2.03m)	• 15.75 x 8.86-ft (4.8 x 2.7m)
	diagonal size	• 162.54" (4.13m)	• 108.36" (2.75m)	• 135.45" (3.44m)	• 162.54" (4.13m)	• 216.72" (5.51m)
	optimal viewing distance	• 7.5' (2.29m)	• 10' (3.05m)	• 12.5' (3.81m)	• 15' (4.58m)	• 20' (6.10m)
	power	• Redundant internal power supplies included with automatic failover to maximize uptime				
		• 8460W max • 2808W typical	• 2912W max • 976W typical	• 4400W max • 1475W typical	• 6264W max • 2088W typical	• 6208W max • 2048W typical
	heat at wall	• 2742 BTU/hr max • 910 BTU/hr typical	• 3775 BTU/hr max • 1265 BTU/hr typical	• 5705 BTU/hr max • 1913 BTU/hr typical	• 8122 BTU/hr max • 2707 BTU/hr typical	• 8050 BTU/hr max • 2665 BTU/hr typical
	total weight	• 724.61lbs (328.68kg)	• 322.05lbs (146.08kg)	• 503.20lbs (228.25kg)	• 724.61lbs (328.68kg)	• 1288.20lbs (584.32kg)
	service	• Full front access for installation and service				
Performance	runtime	• 24/7				
	LED Lifespan	• 100,000 hrs typical				
	warranty	• Three years parts and labor standard limited warranty, with the option to purchase extended warranty				

Terms and conditions

- › Specifications are subject to change without notice
- › Includes direct-mount system for fixed installations on flat load-bearing walls; custom mounts are available for an extra charge
- › Contact your Christie sales rep for a custom quote for variations on configuration or specifications
- › Assisted installation is available as an option - freight and accessories quoted separately

The complete solution

When you choose Christie, we work with you every step of the way to map out a solution that will bring your vision to reality. With our extensive range of display technologies, processing and content management systems, we help customers create the world's most memorable shared experiences. Through our expert advice and working alongside our extensive network of partners, determining the Christie solution that best meets your needs is easy.

For the most current specification information, please visit christiedigital.com

Copyright 2021 Christie Digital Systems USA, Inc. All rights reserved. All brand names and product names are trademarks, registered trademarks or tradenames of their respective holders. "Christie" is a trademark of Christie Digital Systems USA, Inc., registered in the United States of America and other countries. DLP® and the DLP logo are registered trademarks of Texas Instruments. Performance specifications are typical. Due to constant research, specifications are subject to change without notice. CD2023_Christie Core Series II LED_VideoWall_Bundle_DataSheet_June-21_EN



CHRISTIE®