

CHRISTIE VELVET CORE SERIES LED VIDEO WALL BUNDLE

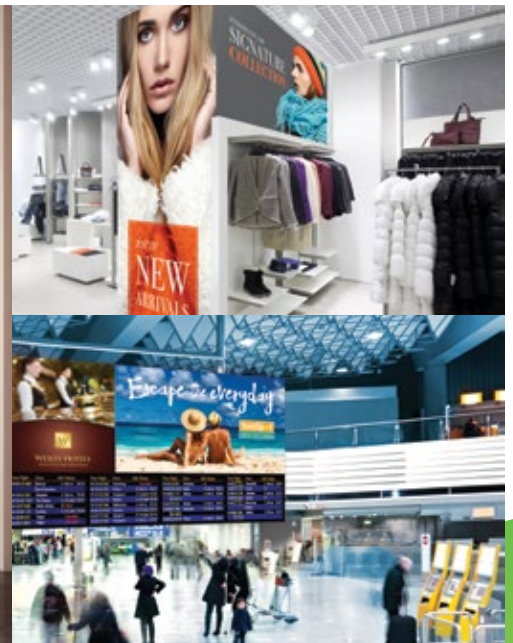
The easiest way to integrate a seamless, full HD LED video wall

The Christie® Velvet® Core Series LED video wall bundle is a complete solution that includes everything required to easily integrate a seamless, HD resolution video wall. Comprising ultra-fine pitch Core Series LED, this high-value video wall bundle is perfect for corporate spaces, such as lobbies, meeting and conference rooms, as well as digital signage applications such as malls, convention centers, airports, subway and train stations.

Simply choose the size and pitch of video wall you need and we'll take care of the rest. That includes making sure you have all the LED tiles, controllers, cabling, and turnkey installation needed to quickly and easily integrate the video wall into your space. You can also easily enhance the performance capabilities of your video wall by adding any of our optional processing and content management technologies. It's never been easier to spec an LED video wall.

Key features and benefits

- › High-definition, bright and seamless visuals with wide viewing angles
- › 24/7 operation with 100,000 hour lifetime (to half brightness)
- › 16:9 aspect ratio
- › Scales to common resolutions including FHD and 4K
- › All installation and service from the front
- › Slim, ADA-compliant direct mount system (less than 100mm depth)
- › System level certification (UL60950)
- › On-board redundant power supply with automatic failover to maximize uptime
- › Three years parts and labor limited warranty, extended warranty option available
- › Full range of optional processing and content management technologies*
- › The service and support including turnkey installation to get your video wall up and running quickly



* Core Series LED tiles are compatible with our E600 controller for simple system design and enhanced processing that can deliver 4K@60Hz, HDR10 and low brightness enhancements

* Additional cost

Bundle components

Components included	Core 1.2mm FHD bundle	Core 1.5mm FHD bundle	Core 1.8mm FHD bundle	Core 2.5mm FHD bundle
LED tiles	• 16 x LED012-C-I	• 25 x LED015-C-I	• 36 x LED018-C-I	• 64 x LED025-C-I
Control unit(s)	• 1 x E500	• 1 x E500	• 1 x E500	• 1 x E500
HARN main power cables (10M)	• 2	• 3	• 3	• 3
Wall cables	• Includes main (50m) and video interconnect cables, in addition to interconnect power cables			
Spare parts	• 5% of purchase			
Direct mount system	• Included			
Installation and commissioning	• Included within continental USA. Additional costs may apply outside this region			

LED video wall bundle specifications

Technical specifications	Core 1.2mm FHD bundle	Core 1.5mm FHD bundle	Core 1.8mm FHD bundle	Core 2.5mm FHD bundle	
Display	resolution	• 1920 x 1080			
	pixel pitch	• 1.2mm	• 1.5mm	• 1.8mm	• 2.5mm
	brightness	• 600 nits (cd/m ²)			
	aspect ratio	• 16:9			
	contrast	• 3000:1			
	viewing angle	• 160° horizontal + 140° vertical			
	refresh rate	• >2,500Hz			
Physical	array size	• 4 x 4	• 5 x 5	• 6 x 6	• 8 x 8
	number of tiles	• 16	• 25	• 36	• 64
	wall dimensions (LxW)	• 7.87 x 4.43-ft (2.4 x 1.35m)	• 9.84 x 5.54-ft (3 x 1.69m)	• 11.81 x 6.64-ft (3.6 x 2.03m)	• 15.75 x 8.86-ft (4.8 x 2.7m)
	diagonal size	• 108.36" (2.75m)	• 135.45" (3.44m)	• 162.54" (4.13m)	• 216.72" (5.51m)
	optimal viewing distance	• 10-ft (3.05m)	• 12.5-ft (3.81m)	• 15-ft (4.58m)	• 20-ft (6.10m)
	minimum viewing distance	• 4.1-ft (1.3m)	• 5.1-ft (1.6m)	• 6.2-ft (1.9m)	• 8.2-ft (2.5m)
	power	• Redundant internal power supplies included (n+1 redundancy) with automatic failover to maximize uptime; 220 VAC input voltage			
		• 2880W max • 960W typical	• 4500W max • 1500W typical	• 6480W max • 2160W typical	• 6784W max • 2240W typical
	heat at wall	• 9826.56 BTU/hr max • 3275.52 BTU/hr typical	• 15,354.00 BTU/hr max • 5118.00 BTU/hr typical	• 22,109.76 BTU/hr max • 7369.92 BTU/hr typical	• 23,147.01 BTU/hr max • 7715.67 BTU/hr typical
	total weight	• 322.05lbs (146.08kg)	• 503.20lbs (228.25kg)	• 724.61lbs (328.68kg)	• 1288.20lbs (584.32kg)
service	• Full front access for installation and service				
Performance	runtime	• 24/7			
	LED Lifespan	• 100,000 hrs (to 50% brightness)			
	warranty	• Three years parts and labor limited warranty; extended warranty also available			
	support	• Christie Digital Systems Global Professional Services team			

Terms and conditions

- › Specifications are subject to change without notice
- › Direct mount system included for fixed installation onto load bearing flat walls - custom mounts are available for an extra charge
- › Variation to configuration or specifications can be done with a custom quote - contact Christie sales
- › Turnkey installation and commissioning included** - freight and accessories quoted separately



The complete solution

When you choose Christie, we work with you every step of the way to map out a solution that will bring your vision to reality. With our extensive range of display technologies, processing and content management systems, we help customers create the world's most memorable shared experiences. Through our expert advice and working alongside our extensive network of partners, determining the Christie Velvet solution that best meets your needs is easy.

** Included within continental USA. Additional costs may apply outside this region

For the most current specification information, please visit christiedigital.com



Copyright 2019 Christie Digital Systems USA, Inc. All rights reserved. All brand names and product names are trademarks, registered trademarks or tradenames of their respective holders. Performance specifications are typical. Due to constant research, specifications are subject to change without notice. 4817 Nov 19

